

Price list of Small Scale Pellet mill

1. Introduction

With the fast development of biomass energy saving project, this kind of Flat Die Pellet Press machine become very popular. Since it has changed to process the waste biomass materials and agriculture wastes to wood pellet. This machine has a history for more than 10 years. At the beginning, it mainly used to process the pellet as feedstuff. But recent years, people change the machine through improving the quality of main parts in the machine, in order to make it to process the waste biomass material such as sawdust, straw etc. The final wood pellet can be burned as green fuel in pellet stove or boiler.

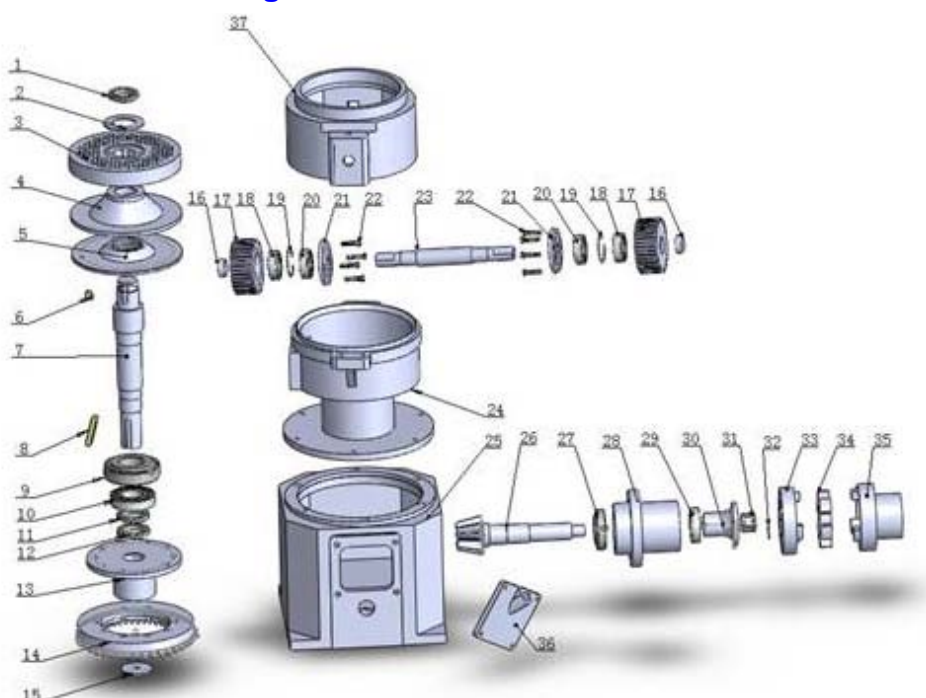
For using this flat die pellet press, we got some feedback from our customers. They obtained some experience when they were using this machine to produce wood pellet. Hope it is helpful for you:

- 1) Best moisture is 15% for all materials
- 2) The temperature is constant about 90-95°C, you have to take over the pellet just coming out from this pellet press and cooling it before touching it by hand.

Furthermore, we improved our machine more suitable to produce wood pellet after absorbing & digesting the feedback from our customers. In general, they're:

- 1) Special raw material on the main parts such as roller, template, matrix
Prolonging the life than other similar products in China when process wood pellet after this modification.
- 2) Modify the whole in the matrix to improve performance of the machines. It's more easy to making pellet.
- 3) We have got the CE Certificate from SGS to meet EU client's requirement.

2. Structure Drawing



No.	Name	Qty	No.	Name	Qty
1	Upper hopper	1	20	Big bearing cap	1
2	Adjusting screw	2	21	Discharge plate	1
3	Upper shell	1	22	Main shaft big bearing	1
4	Lower shell	1	23	Main shaft small bearing	1
5	Dipstick	1	24	Connect gear plate	1
6	Checking window	1	25	Bevel gear	1
7	Output gate	1	26	Pressuring roller bearing	4
8	Gear-box	4	27	Pressuring roller	2
9	Base wheel	1	28	Template/die	1
10	Current meter	1	29	Horizontal shaft big bearing	1
11	Voltmeter	1	30	Horizontal shaft cover	1
12	Electricity box	1	31	Angle gear	1
13	Electricity box support	1	32	Horizontal shaft small bearing	1
14	Basis	1	33	Framework oil seal	1
15	Generator	1	34	Cushion	1
16	Pressuring roller bearing cover	1	35	Gibbosity	1
17	Main shaft cap.lock . flat ring	1	36	Initiative shaft coupling	1
18	Main shaft	1	37	Passivity shaft coupling	1
19	Knife	1			

3. Technician parameter and price:

Address: Haihe Road, Anyang, Henan, China
 Tel: 86-372-5965148 ext 8017 Fax: 86-372-5951936
 Email: agico26@ayimpex.com

ZLSP120B pellet mill	
Capacity:	40-80kg/h (biomass pellet)
	60-100kg/h (feed pellet)
Power:	2.2kw, single phase, or 3kw, 3phase
Input size of raw material	<5*5mm
Input moisture of raw material	10-15%
Diameter of die	120mm
Size of final pellet	Diameter: 4-10mm, 2.5 and 3mm is also ok, but the price of die is higher
G.W Weight	77kg
Dimension	800*320*740mm
Price (USD/FOB)	USD 490.00 (4pcs)



ZLSP120A pellet mill (gasoline)	
Capacity:	40-80kg/h (biomass pellet)
	60-100kg/h (feed pellet)
Power:	7.5hp gasoline engine
Input size of raw material	<5*5mm
Input moisture of raw material	10-15%
Diameter of die	120mm
Size of final pellet	Diameter: 4-10mm, 2.5 and 3mm is also ok, but the price of die is higher
G.W Weight	105kg
Dimension	870*460*730mm
Price (USD/FOB)	USD 520.00 (4pcs)



Address: Haihe Road, Anyang, Henan, China
 Tel: 86-372-5965148 ext 8017 Fax: 86-372-5951936
 Email: agico26@ayimpex.com

ZLSP120A pellet mill (diesel)	
Capacity:	40-80kg/h (biomass pellet)
	60-100kg/h (feed pellet)
Power:	8hp diesel engine
Input size of raw material	<5*5mm
Input moisture of raw material	10-15%
Diameter of die	120mm
Size of final pellet	Diameter: 4-10mm, 2.5 and 3mm is also ok, but the price of die is higher
G.W Weight	130kg
Dimension	1000*500*770mm
Price (USD/FOB)	USD 640.00 (4pcs)
The matched diesel engine is hand-operated. If you want electrical starter, the price add USD 250.00	



ZLSP150B pellet mill	
Capacity:	50-90kg/h (biomass pellet)
	90-120kg/h (feed pellet)
Power:	4kw, 3phase
Input size of raw material	<5*5mm
Input moisture of raw material	10-15%
Diameter of die	150mm
Size of final pellet	Diameter: 4-10mm, 2.5 and 3mm is also ok, but the price of die is higher
G.W Weight	100kg
Dimension	800x350x740mm
Price (USD/FOB)	USD 565.00 (4pcs)



ZLSP150A pellet mill (gasoline)	
Производительность:	50-90kg/h (biomass pellet)
	90-120kg/h (feed pellet)
Двигатель:	7.5hp gasoline engine
Размер входного сырья	<5*5mm
Влажность входного сырья	10-15%
Диаметр матрицы	150mm
Размер готовых пеллет	Diameter: 4-10mm, 2.5 and 3mm is also ok, but the price of die is higher
Вес брутто	120kg
Габариты	870x460x730mm
Цена (USD/FOB)	USD 545.00 (4pcs)



ZLSP150A pellet mill (diesel)	
Производительность:	50-100kg/h (biomass pellet)
	90-120kg/h (feed pellet)
Двигатель:	8hp diesel engine
Размер входного сырья	<5*5mm
Влажность входного сырья	10-15%
Диаметр матрицы	150mm
Размер готовых пеллет	Diameter: 4-10mm, 2.5 and 3mm is also ok, but the price of die is higher
Вес брутто	150kg
Габариты	1000*500*770mm
Цена (USD/FOB)	USD 680.00 (4pcs)
The matched diesel engine is hand-operated. If you want electrical starter, the price add USD 250.00	



ZLSP200B пресс гранулятор	
Производительность:	80-120кг/ч (пеллет биотопливо)
	200-300кг/ч(корма)
Двигатель:	7.5кВт, 3фазы
Размер входного сырья	<5*5мм
Влажность входного сырья	10-15%
Диаметр матрицы	200мм
Размер готовых пеллет	Диаметр: 4-10мм, 2,5или 3мм тоже можно просто цена чуть выше.
Вес брутто	204кг
Габариты	1050*480*990мм
Цена (USD/FOB)	USD 932.00
Защитная крышка для мотора: добавлять USD 30.00	



ZLSP200A pellet mill (diesel)	
Производительность:	80-120кг/ч(пеллет биотопливо)
	200-300кг/ч(корма)
Двигатель:	15л.с дизель
Размер входного сырья	<5*5мм
Влажность входного сырья	10-15%
Диаметр матрицы	200мм
Размер готовых пеллет	Диаметр: 4-10мм, 2,5или 3мм тоже можно просто цена чуть выше.
Вес брутто	329кг
Габариты	1450*750*870мм
Цена (USD/FOB)	USD 1135.00
Согласованный дизельный двигатель с ручным управлением . Если вы хотите Электрический стартер,цена добавить USD 300.00	



ZLSP230B pellet mill	
Capacity:	120-200kg/h (biomass pellet)
	300-400kg/h (feed pellet)
Power:	11kw, 3phase
Input size of raw material	<5*5mm
Input moisture of raw material	10-15%
Diameter of die	230mm
Size of final pellet	Diameter: 4-10mm, 2.5 and 3mm is also ok, but the price of die is higher
G.W Weight	218kg
Dimension	1180*520*1020mm
Price (USD/FOB)	USD 1242.00
Motor protecting cover: add USD 40.00	



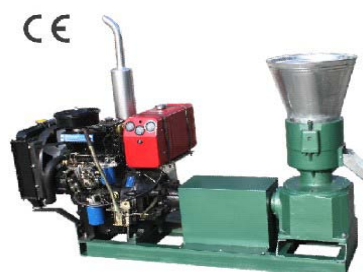
ZLSP230A pellet mill (diesel)	
Capacity:	120-200kg/h (biomass pellet)
	300-400kg/h (feed pellet)
Power:	22hp diesel engine
Input size of raw material	<5*5mm
Input moisture of raw material	10-15%
Diameter of die	230mm
Size of final pellet	Diameter: 4-10mm, 2.5 and 3mm is also ok, but the price of die is higher
G.W Weight	450kg
Dimension	1500*800*920mm
Price (USD/FOB)	USD 1339.00
The matched diesel engine is hand-operated. If you want electrical starter, the price add USD 300.00	



ZLSP260B pellet mill	
Capacity:	160-250kg/h (biomass pellet) 400-600kg/h (feed pellet)
Power:	15kw, 3phase
Размер входного сырья	<5*5мм
Влажность входного сырья	10-15%
Диаметр матрицы	260мм
Размер готовых пеллет	Диаметр: 4-10мм, 2.5 и 3мм тоже в порядке, но цена выше.
Вес брутто	300кг
Габариты	1240*540*1070мм
Цена (USD/FOB)	USD 1643.00
Защитная крышка для мотора: добавлять USD 50.00	



ZLSP260A pellet mill (diesel)	
Capacity:	160-250kg/h (biomass pellet) 400-600kg/h (feed pellet)
Power:	35hp diesel engine
Input size of raw material	<5*5mm
Input moisture of raw material	10-15%
Diameter of die	260mm
Size of final pellet	Diameter: 4-10mm, 2.5 and 3mm is also ok, but the price of die is higher
G.W Weight	490kg
Dimension	1840*700*1160mm
Price (USD/FOB)	USD 3005.00
The diesel engine matched above is already with electric starter.	



Address: Haihe Road, Anyang, Henan, China
Tel: 86-372-5965148 ext 8017 Fax: 86-372-5951936
Email: agico26@ayimpex.com

ZLSP300B pellet mill	
Capacity:	250-320kg/h (biomass pellet)
	600-800kg/h (feed pellet)
Power:	22kw, 3phase
Input size of raw material	<5*5mm
Input moisture of raw material	10-15%
Diameter of die	300mm
Size of final pellet	Diameter: 4-10mm, 2.5 and 3mm is also ok, but the price of die is higher
G.W Weight	437kg
Dimension	1300*560*1220mm
Price (USD/FOB)	USD 2157.00



Motor protecting cover: add USD 50.00

ZLSP300A pellet mill (diesel)	
Capacity:	250-350kg/h (biomass pellet)
	600-800kg/h (feed pellet)
Power:	55hp diesel engine
Input size of raw material	<5*5mm
Input moisture of raw material	10-15%
Diameter of die	300mm
Size of final pellet	Diameter: 4-10mm, 2.5 and 3mm is also ok, but the price of die is higher
G.W Weight	560kg
Dimension	2200*600*1230mm
Price (USD/FOB)	USD 4012.00



The diesel engine matched above is already with electric starter

ZLSP360C pellet mill	
Capacity:	320-380kg/h (biomass pellet)
	800-900kg/h (feed pellet)
Power:	22kw, 3phase
Input size of raw material	<5*5mm
Input moisture of raw material	10-15%
Diameter of die	360mm
Size of final pellet	Diameter: 4-10mm, 2.5 and 3mm is also ok, but the price of die is higher
G.W Weight	500kg
Dimension	1340*580*1060mm
Price (USD/FOB)	USD 2673.00



ZLSP360A pellet mill (diesel)	
Capacity:	320-380kg/h (biomass pellet)
	800-900kg/h (feed pellet)
Power:	55hp diesel engine
Input size of raw material	<5*5mm
Input moisture of raw material	10-15%
Diameter of die	360mm
Size of final pellet	Diameter: 4-10mm, 2.5 and 3mm is also ok, but the price of die is higher
G.W Weight	610kg
Dimension	2270*620*1260mm
Price (USD/FOB)	USD 4366.00
The diesel engine matched above is already with electric starter	



ZLSP400C pellet mill	
Capacity:	400-450kg/h (biomass pellet)
	900-1100kg/h (feed pellet)
Power:	30kw, 3phase
Input size of raw material	<5*5mm
Input moisture of raw material	10-15%
Diameter of die	400mm
Size of final pellet	Diameter: 4-10mm, 2.5 and 3mm is also ok, but the price of die is higher
G.W Weight	660kg
Dimension	1520*600*1150mm
Price (USD/FOB)	USD 3867.00



ZLSP400A pellet mill (diesel)	
Capacity:	400-450kg/h (biomass pellet)
	900-1100kg/h (feed pellet)
Power:	55hp diesel engine
Input size of raw material	<5*5mm
Input moisture of raw material	10-15%
Diameter of die	400mm
Size of final pellet	Diameter: 4-10mm, 2.5 and 3mm is also ok, but the price of die is higher
G.W Weight	790kg
Dimension	2270*620*1260mm
Price (USD/FOB)	USD 5453.00
The diesel engine matched above is already with electric starter	



Address: Haihe Road, Anyang, Henan, China
 Tel: 86-372-5965148 ext 8017 Fax: 86-372-5951936
 Email: agico26@ayimpex.com

4. Price of spare parts

Model	Flat Die (4mm-10mm)	Die Flat die (3mm)	Flat die (2.5mm)	Press Roller
ZLSP120	\$ 34	\$ 45	\$ 56	\$ 37
ZLSP150	\$ 45	\$ 65	\$ 76	\$ 40
ZLSP200	\$ 58	\$ 75	\$ 90	\$ 63
ZLSP230	\$ 75	\$ 105	\$ 125	\$ 75
ZLSP260	\$ 100	\$ 133	\$ 160	\$ 100
ZLSP300	\$ 148	\$ 185	\$ 220	\$ 145
ZLSP360	\$ 178	\$ 250	\$ 290	\$ 280

5. Electric control panel

CHINT, SIMENS famous electric component, the electric panel have heat radiation structure, wire arranged as per CE standard. The details are as follows:

1) Air Switch postposition (EU standard):



2) Emergency stop

In our control cabinet, there is emergency stop



3) Inside and outside of control cabinet

Address: Haihe Road, Anyang, Henan, China
 Tel: 86-372-5965148 ext 8017 Fax: 86-372-5951936
 Email: agico26@ayimpex.com



6. View of GEMCO



workshop



Batch delivery

Address: Haihe Road, Anyang, Henan, China
Tel: 86-372-5965148 ext 8017 Fax: 86-372-5951936
Email: agico26@ayimpex.com



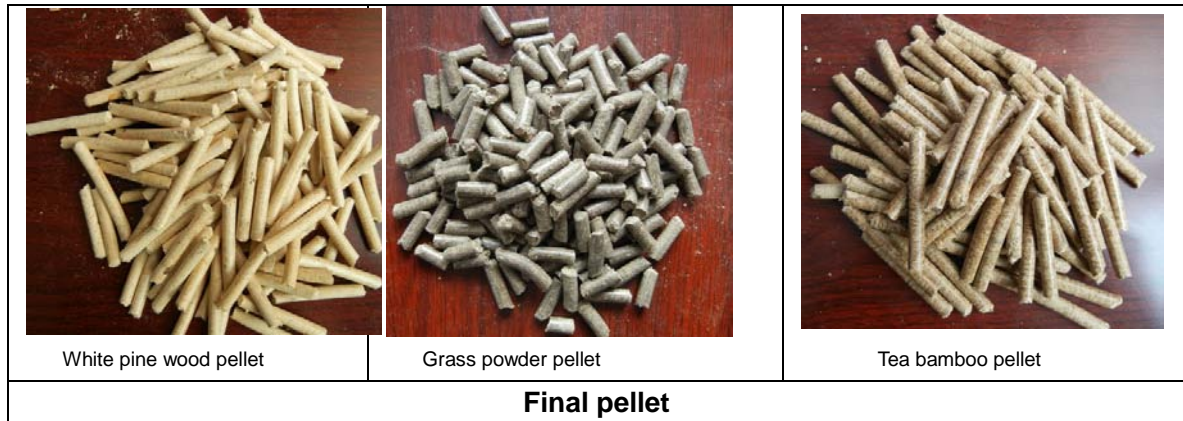
Spare parts



Delivery photos



Address: Haihe Road, Anyang, Henan, China
 Tel: 86-372-5965148 ext 8017 Fax: 86-372-5951936
 Email: agico26@ayimpex.com



7. Other items:

1) **Delivery time:** Two weeks after receiving clients' prepayment.

2) Payment term:

2.1) If the amount is less than USD3000, 100% prepayment by T/T

2.2) If the amount is more than USD3000,
30% as prepayment by T/T, the balance of 70% is paid before delivery.

3) Quality Guarantee Terms

Quality guarantee term is for one year from receiving the machines. Any broken which are caused by machine-self and quality will be responsible for our manufacturer. Others which are caused by operation mistakes, man-made problems, etc will be responsible for clients-self.

4) Valid time

This quotation is valid from July 01th, 2013 to Dec.31th,2013

5) Electricity situation

All of the machines listed above are matched Chinese Standard electricity situation: 380 Volts, 50Hz, 3 phases. If clients have special electricity requirements on the machines, clients should pay the extra cost of electricity special require.

The price of pellet mills above used for minimum quantity is one unit. For quantity more than five units or large quantity, we can give you discount in different degree.

Waiting for your order,
Best wishes,
Eva.

Address: Haihe Road, Anyang, Henan, China
Tel: 86-372-5965148 ext 8017 Fax: 86-372-5951936
Email: agico26@ayimpex.com