



# LIDA GROUP

Add: Room 1102, Zhonghui Building, Haier Road, Qingdao China

Tel: 86-532-88966982 Fax: 86-532-88965571 Email:sam@lidajituan.com

---

## 20'GP Flat Packing Container House

### Description:

Container House is designed and developed according to the standard size of shipping container. Transportation is designed in accordance with a standard ISO shipping container. The corner casting structure enables lifting capability utilizing a crane in the same manner as a standard ISO shipping container. It is of heatproof and waterproof. It is widely used as Site office, site living room, meeting room, dormitory, shop, toilet, storage, kitchen, shower room and so on. Light material without overload, easy to pack and transport. The house can be assembled and disassembled more than 6 times, and the service life is more than 20 years.

### Characteristics:

1. Cost Saving on transportation, construction and change internal layouts.
3. Could be lifted, fixed and combined freely.
4. Efficient Transportation(Transportation saving up to 75%;Crane and forklift capability)
5. Fast Construction (Construction time reduced up to 40%;Installation can be achieved with two skilled workers)
5. Anti-rust and normally more than 15 years using life
6. Good ability to assemble and disassemble for several times.

### Technical Parameter of standard prefabricated house:

Wind resistance: Grade 11(wind speed $\leq$ 111.5km/h)

Earthquake resistance: Grade 7

Live load capacity of roofing: 0.5kn/m<sup>2</sup>

External and internal wall heat transmission coefficient: 0.35Kcal/m<sup>2</sup>hc

Live load of floor is 2.0kn/ m<sup>2</sup>

## Specification and material list

No.	Item	Specification & Remark	Photo
1	<b>Length</b>	Inner length /external length :5.81m/6.06m	 <p>The photo shows a white container unit in a warehouse. Below it are technical drawings: a side elevation showing an inner length of 5810mm and an outer length of 6060mm, with a door width of 1850mm and a height of 2100mm; a front elevation showing an inner width of 2188mm and an outer width of 2438mm; and a top-down view showing the overall dimensions and a forklift opening labeled 'M'.</p>
	<b>Width</b>	Inner width /external width: 2.188m/2.438m	
	<b>Height</b>	Inner height/external height:2,410m/2.591m	
	<b>Weight</b>	2000kg per unit	
2	<b>Steel frame</b>	<p>Material: Q345 steel ; Thickness, 3.5~4.0mm</p> <p>Floor Support:C80x40x1.8</p> <p>Surface working: sand blasting, epoxy basic painting 55μm, final vinyl acrylic painting 55μm thick</p> <p>Forklift openings: size 100*250mm, distance is 1200mm</p>	 <p>The photo shows the steel frame structure of the container unit in a warehouse. Two workers are visible for scale. The frame is made of light-colored steel beams.</p>

3

**Roof**

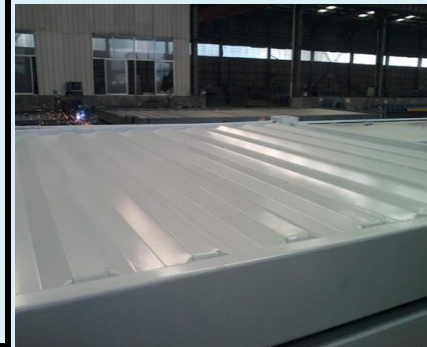
Outside Steel: 1.2mm steel sheet, weld with the roof frame.

Keel: C80x40x20x2.0 steel purline

Insulation Layer: 80mm thickness fiber glass

Ceiling: 3mm thickness PVC ceiling

Rainspout: Water flow to the four corner



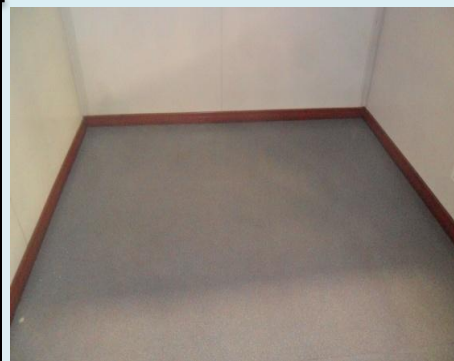
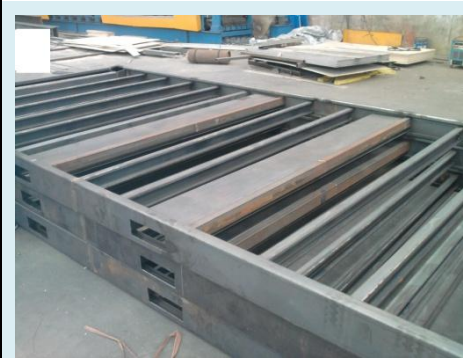
4

**Floor**

Floor bottom board: 0.2mm thickness steel sheet  
Keel: C80x40x20x2.0 steel purline

Insulation Layer: 100mm thickness fiber glass

Wooden floor: 20mm thickness plywood  
Surface: Floor leather 2-3mm thickness



5	<b>Windows and Doors</b>	<p>Windows:PVC frame sliding window with steel rolling shutter</p> <p>Doors: Sandwich panel steel Door</p>	 
6	<b>Wall</b>	<p>Wall Panel: 75mm thickness sandwich panel (Alternative insulation material: PU, EPS, Rock Wool)</p>	

7

**Electricity System**

Double tube fluorescent light (usually 2 pcs)



Distribution board: CE approval (1 pc)









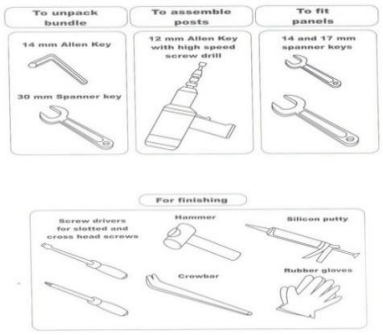
Socket: 16A (Usually 2 pcs)  
Double connection plane switch



Electric wire: Three color wiring  
Voltage: 110~220V, 50~60Hz



8	<b>Floor</b>	2-3mm thickness PVC floor leather	
9	<b>Others</b>	Lift corner piece	
		Rainspout: $\Phi 50$ PVC pipe	

10	Technical parameter	House load	Bearing max. load capacity 2.0 kN/m <sup>2</sup> (200 kg/m <sup>2</sup> )	
		Wind load:	25 m/s (90 km/h)	
		Compression capability	150kg/m <sup>3</sup>	
		fire proof	B2 grade	
11	Transportation	Four units one bundle	  	
12	Installation	Tools and workers	<p>To unpack bundle: 14mm Allen key, 30mm spanner key</p> <p>To assemble post: 12mm Allen key</p> <p>To fit panels: 14 and 17mm spanner keys</p> <p>Others: Screw driver, hammer, silicon putty, crowbar</p> <p>Installation efficiency: Four skilled workers one day can erect two container house.</p>	



<p><b>13</b></p>	<p><b>Foundation</b></p>	<p>Concrete</p>	<p><b>* on a flat solid surface ( asphalt, concrete,.....)</b>  <b>* one point foundations (concrete cubes, dimensions 30/30/30cm,6pcs/20' container)</b>  <b>* on strip foundations (concrete band,30cm wide, on the container circumference)</b></p>	
<p>14</p>	<p><b>Finished Projects</b></p>			