



Limits of use

- Ambient temperature: Up to +40°C
- Liquid temperature: Up to +90°C
- PH value of liquid between 6.5-8.5
- Power: 50hz, single-phase 220v, three-phase 380v, fluctuated up and down 10%

Features

- The 2MCPH series two-stage centrifugal pump for hot water is optimized and reconstructed on the basis of horizontal multi-stage centrifugal pump, while the water supply and drainage condition in high-rise buildings is also taken into consideration during product design.
- This stainless steel hot water centrifugal pump adopts a highly efficient and energy saving hydraulic model, so it exhibits high efficiency and wide performance range, thereby better meeting customer requirement. On the other hand, our multi-stage vertical centrifugal pump is also characterized by safe running, stable performance, small footprint, easy maintenance, long service life and other properties.

Application

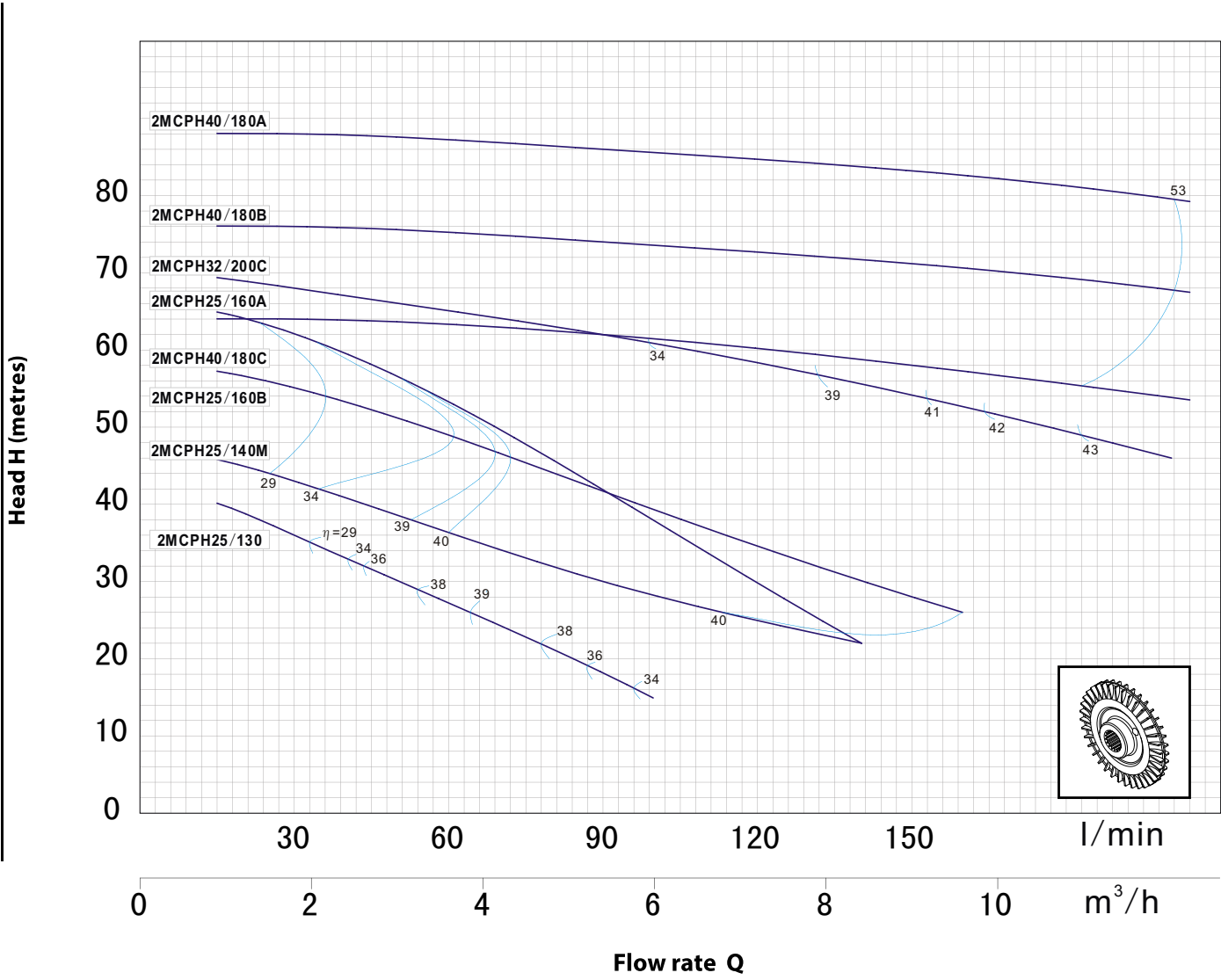
- Be used to delivery the clean water without the abrasive particles
- Be used to clean or cool the machine tools with high pressure
- Be used to pump the water for the industrial or house use from the well
- Be used to boost the water in pressurization system
- The 2MCPH series two-stage centrifugal pump is designed according to ISO 2858 and JB/T53058-93 standards, and it is a highly efficient and energy-saving multi-stage centrifugal pump.

Warranty

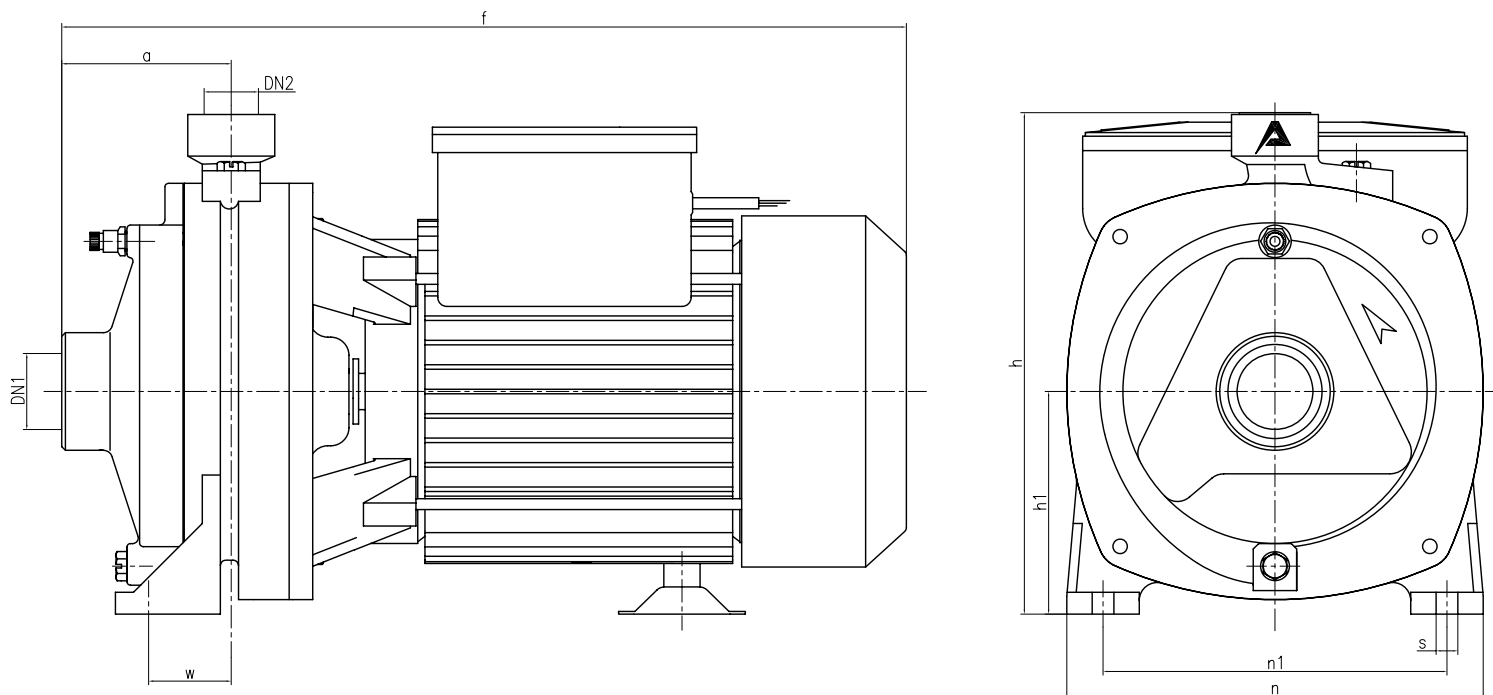
- 2 years subject to terms and conditions

CHARACTERISTIC CURVES AND PERFORMANCE DATA

50 Hz n=2850 rpm Hs=0 m



Model		Power		Q	m ³ /h	0	1.2	1.8	2.4	3.0	3.6	4.2	4.8	5.4	6.0	6.6	7.5	8.4	9.6	10.8	12.0
Single-phase	Three-phase	KW	HP		l/min	0	20	30	40	50	60	70	80	90	100	110	125	140	160	180	200
2MCP25/130	2MC25/130	0.75	1	H m		42	38	36	33	30	27	24	20	18	15						
2MCP25/140M	2MC25/140M	1.1	1.5			47	45	43	41	38	36	34	32	30	28	26	24	22			
2MCP25/160B	2MC25/160B	1.5	2			58	56	55	49	47	45	43	40	38	36	34	31	28	26		
2MCP25/160A	2MC25/160A	2.2	3			66	64	62	60	58	54	50	45	39	34	30	25	22			
2MCP32/200C	2MC32/200C	3	4			70	69	68	67	66	65	64	63	62	61	59	57	55	52	50	46
-	2MC40/180A	7.5	10.0			88	88	88	87	87	87	86	86	86	85	84	84	83	82	81	80
-	2MC40/180B	5.5	7.5			76	76	76	75	75	75	74	74	74	73	72	71	71	70	69	68
-	2MC40/180C	4	5.5			64	64	64	64	63	63	63	62	62	62	61	60	59	58	56	54



Model		Openings		Dimensions(mm)							
Single-phase	Three-phase	DN1	DN2	a	f	h	h1	n	n1	w	s
2MCP25/130	2MC25/130	1 1/4"	1"	83	328	221	92	180	145	17	10
2MCP25/140M	2MC25/140M	1 1/2"	1"	89	403	251	110	200	162	27	10
2MCP25/160B	2MC25/160B	1 1/2"	1"	95	415	277	123	230	190	32	12
2MCP25/160A	2MC25/160A	1 1/2"	1"	95	468	277	123	230	190	32	12
2MCP32/200C	2MC32/200C	1 1/2"	1 1/4"	91	464	302	123	240	190	32	14
-	2MC40/180C	2 1/2"	1 1/2"	157	630	355	160	284	232	45	14
-	2MC40/180B	2 1/2"	1 1/2"	157	630	355	160	284	232	45	14
-	2MC40/180A	2 1/2"	1 1/2"	157	630	355	160	284	232	45	14

Model	Piece	GW(kg)	NW(kg)	Volume(m ³)	L(cm)	W(cm)	H(cm)
2MCPH25/130	1	18.6	17	0.019	36.5	21.0	25.0
2MCPH25/140M	1	27.3	26.5	0.031	44.5	24.5	28.0
2MCPH25/160B	1	38.7	35.5	0.046	51.0	27.5	33.0
2MCPH25/160A	1	40.1	38.1	0.046	51.0	27.5	33.0
2MCPH32/200C	1	42.4	40.4	0.046	51.0	27.5	33.0

POS. COMPONENT

ADVANTAGE



• Anti-rust system

- a. Use electrophoretic paint to prevent rust or jam
- b. To provide cleaner water
- c. To ensure long using-life



• Thermostability system

- a. Capacitor with 85°C high temperature film
- b. Can be used under sun exposure
- c. Can be used under high temperature environment



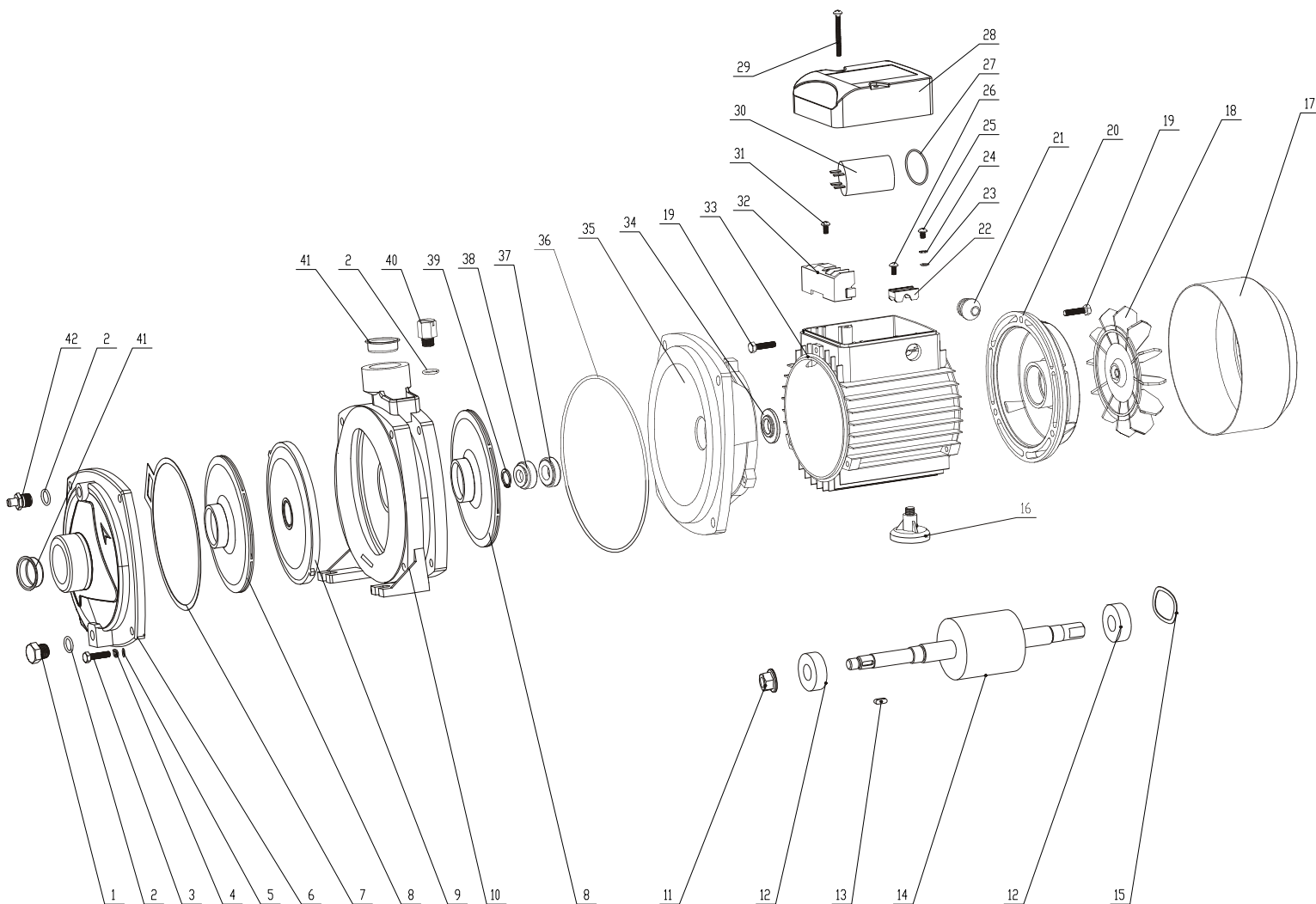
• Powerful motor system

- a. To ensure the high power and lowest temperature rise
- b. Using thermal protection device to protect the motor
- c. Big flow and long using-life
- d. Wide voltage rang design motor can be used under 170 - 250 V



• Low noise system

- a. Using Z4 class bearing to ensure lowest noise
- b. To ensure long using-life



*It is strongly recommended
to use this pump together
with MARQUIS EC to control
your water supply easily.*

