



Limits of use

- Ambient temperature up to +55°C
- Liquid temperature up to +60°C
- PH value of liquid between 6.5-8.5
- Power: 50hz, single-phase 220v, three-phase 380v, fluctuated up and down 10%

Features

- Compact design with attractive appearance
- Can be used for gas-liquid mixed delivery
- High head with steep drop H/Q characteristic curve
- Be used with check valve to prevent backflow of liquid;
- With the increase of viscosity of the liquid delivery, a sharp decline in the efficiency of the pump, and thus not suitable for delivery of high viscosity liquids;
- Due to the performance ensured by the small gap between the impeller and the pump casing therefore can not be used to delivery liquid containing solid particles;

Application

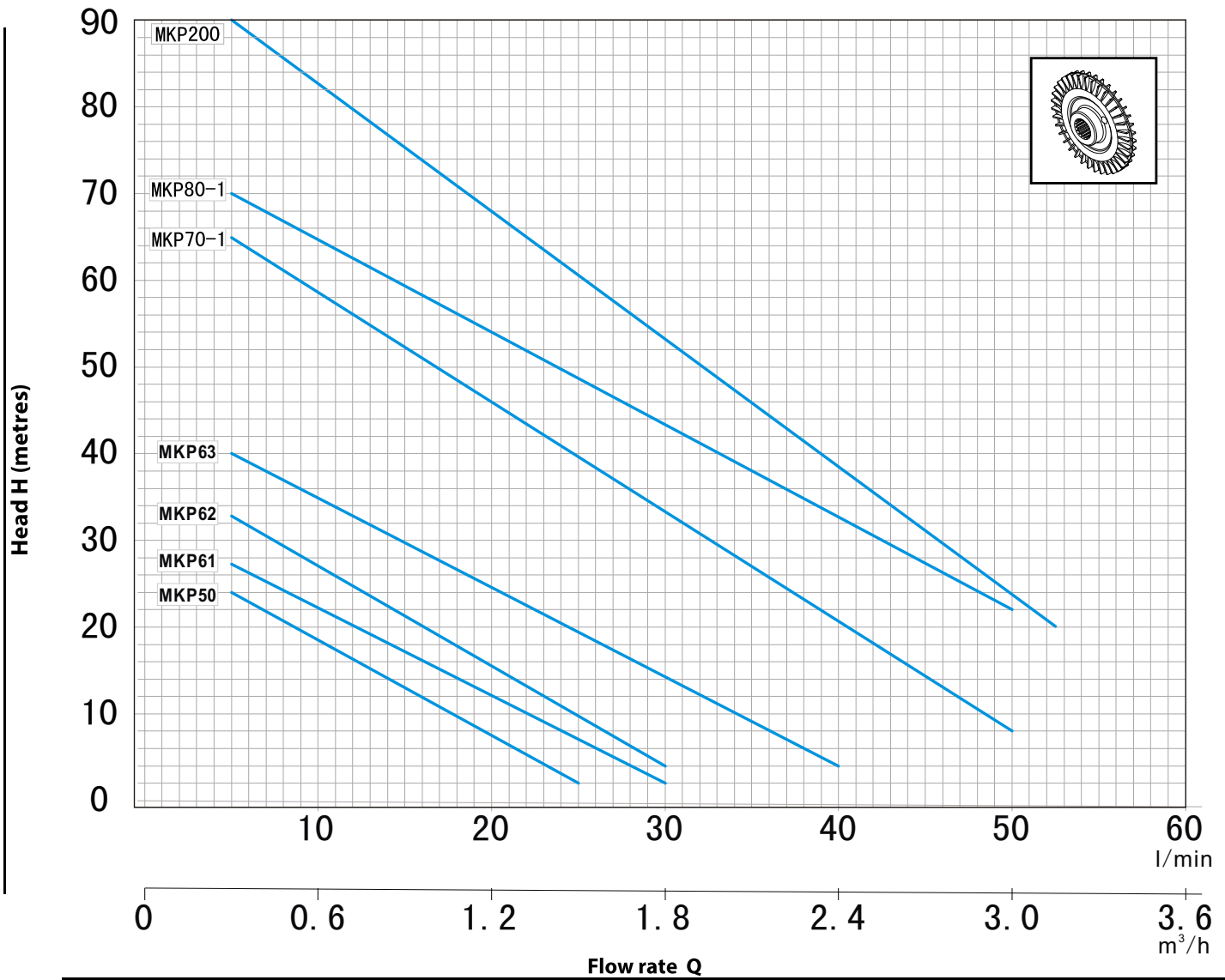
- Be used to delivery the clean water without the abrasive particles
- Be used to clean or cool the machine tools with high pressure
- Be used to pump the water for the industrial or house use from the well
- Be used to boost the water in pressurization system

Warranty

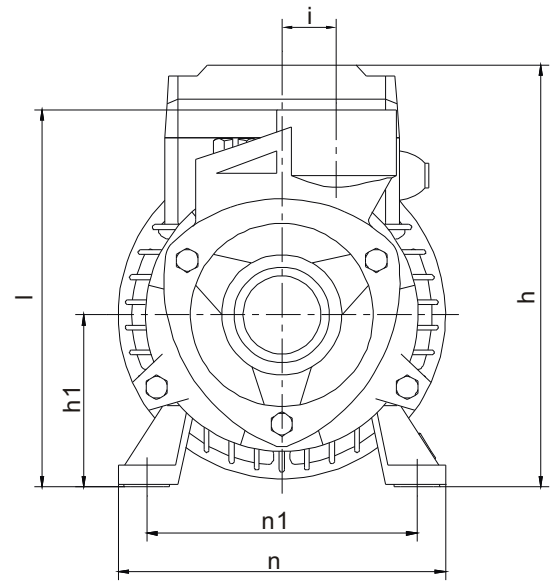
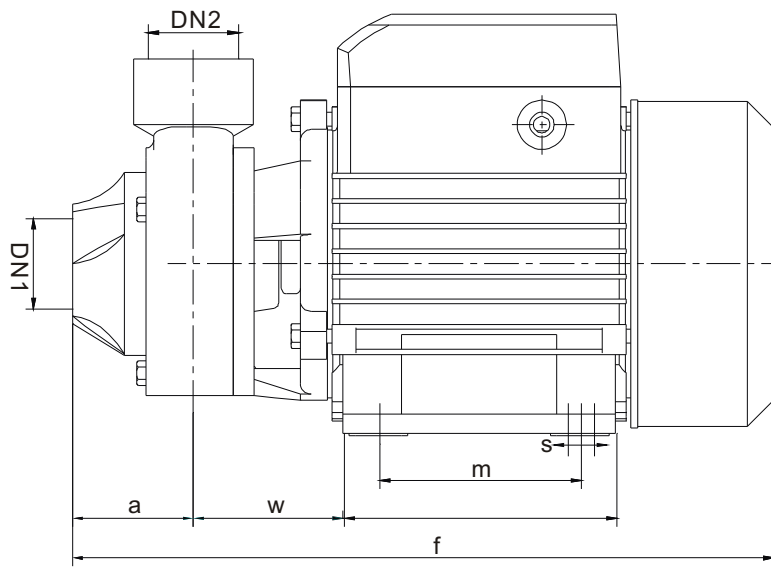
- 2 years subject to terms and conditions

CHARACTERISTIC CURVES AND PERFORMANCE DATA

50 Hz n=2850 rpm Hs=0 m

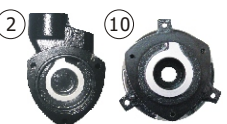







Model		Power		Q	m ³ /h												
Single-phase	Three-phase	KW	HP		0	0.3	0.6	0.9	1.2	1.5	1.8	2.1	2.4	2.7	3.0	3.3	
MKP50	MK50	0.18	0.25	H m	0	5	10	15	20	25	30	35	40	45	50	55	
MKP61	MK61	0.25	0.33		24	20	15	10	6	2							
MKP62	MK62	0.37	0.50		27	22	18	14	10	6	2						
MKP63	MK63	0.42	0.55		33	27	22	17	12	7	4						
MKP70-1	MK70-1	0.55	0.75		40	36	31	26	22	18	14	9	4				
MKP80-1	MK80-1	0.75	1		65	60	51	52	44	37	30	22	17	12	8		
MKP200	MK200	1.5	2		70	65	60	55	50	46	40	36	31	26	22		
					90	84	75	70	66	60	55	50	45	34	28	20	



Model		Openings		Dimensions(mm)										
Single-phase	Three-phase	DN1	DN2	a	f	h	h1	i	l	m	n	n1	w	s
MKP50	MK50	1"	1"	40	230	155	63	17	130	57	118	100	60	7
MKP61	MK61	1"	1"	44	256	155	63	20	142	90	120	100	65	7
MKP62	MK62	1"	1"	44	256	155	63	20	142	90	120	100	65	7
MKP63	MK63	1"	1"	44	230	155	63	17	138	57	118	100	60	7
MKP70-1	MK70-1	1'	1'	47	284	180	71	20	164	103	137	110	66	7
MKP80-1	MK80-1	1"	1"	57	305	180	71	20	163	103	137	110	77	7
MKP200	MK200	1"	1"	55	354	200	80	20	174	100	154	125	81	11

Model	Piece	GW(kg)	NW(kg)	Volume(m ³)	L(cm)	W(cm)	H(cm)
MKP50	1	4.3	4	0.007	25.000	15.00	17.50
MKP61	1	5.4	5.16	0.008	28.300	15.80	17.30
MKP62	1	5.6	5.3	0.007	28.00	14.50	17.50
MKP63	1	6.1	5.8	0.007	25.00	15.00	17.50
MKP70-1	1	8.7	8.3	0.010	30.50	16.00	20.00
MKP80-1	1	10.76	10.36	0.011	33.30	16.40	20.70
MKP200	1	18.62	17.46	0.021	39.00	22.00	25.00

POS. COMPONENT	ADVANTAGE
<p>    </p> <p>Electrophoretic paint and insert the SS-sheet inside the passage</p> <p>Brass impeller</p> <p>Stainless steel shaft</p>	<ul style="list-style-type: none"> • <u>Anti-rust system</u> <ol style="list-style-type: none"> Use electrophoretic paint to prevent rust or jam To provide cleaner water To ensure long using-life
<p>  </p> <p>Thermostability Capacitor</p>	<ul style="list-style-type: none"> • <u>Thermostability system</u> <ol style="list-style-type: none"> Capacitor with 85°C high temperature film Can be used under high temperature environment 55°C
<p>  </p> <p>Rotor with shaft (Stainless steel shaft)</p>	<ul style="list-style-type: none"> • <u>Powerful motor system</u> <ol style="list-style-type: none"> To ensure the high power and lowest temperature rise Using thermal protection device to protect the motor High head and long using-life Wide voltage rang design motor can be used under 180 - 240 V
<p>  </p> <p>Z4 class bearing</p>	<ul style="list-style-type: none"> • <u>Low noise system</u> <ol style="list-style-type: none"> Using Z4 class bearing to ensure lowest noise To ensure long using-life

