



Limits of use

- Ambient temperature up to +55°C
- Liquid temperature up to +60°C
- PH value of liquid between 6.5-8.5
- Power: 50hz, single-phase 220v, three-phase 380v, fluctuated up and down 10%

Features

- Compact design with attractive appearance
- Can be used for gas-liquid mixed delivery
- High head with steep drop H/Q characteristic curve
- Be used with check valve to prevent backflow of liquid;
- With the increase of viscosity of the liquid delivery, a sharp decline in the efficiency of the pump, and thus not suitable for delivery of high viscosity liquids;
- Due to the performance ensured by the small gap between the impeller and the pump casing therefore can not be used to delivery liquid containing solid particles;

Application

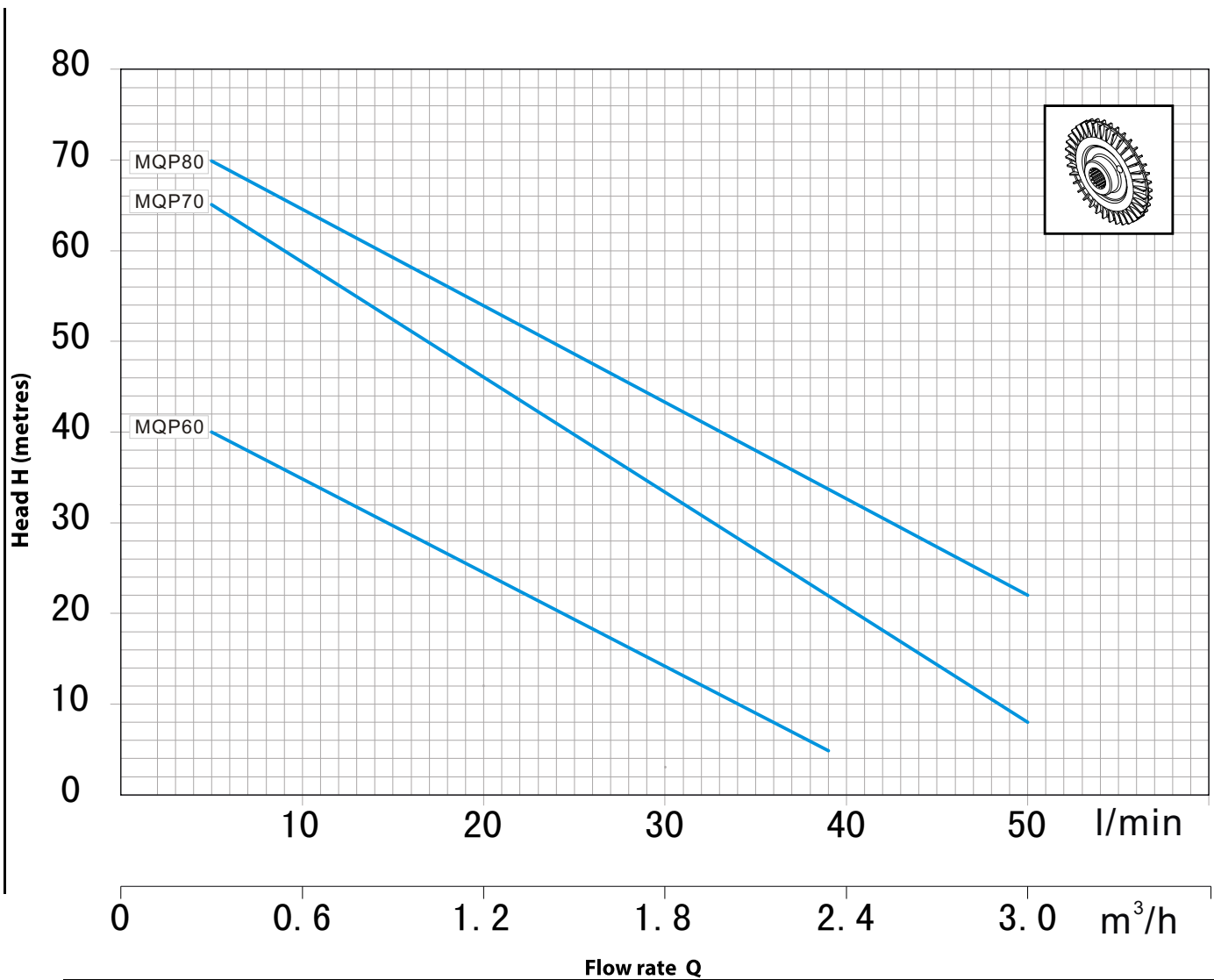
- Be used to delivery the clean water without the abrasive particles
- Be used to clean or cool the machine tools with high pressure
- Be used to pump the water for the industrial or house use from the well
- Be used to boost the water in pressurization system

Warranty

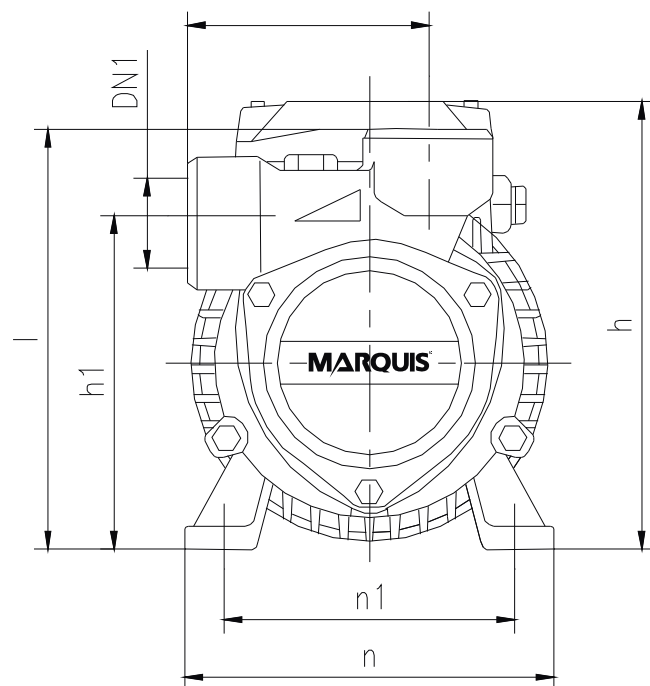
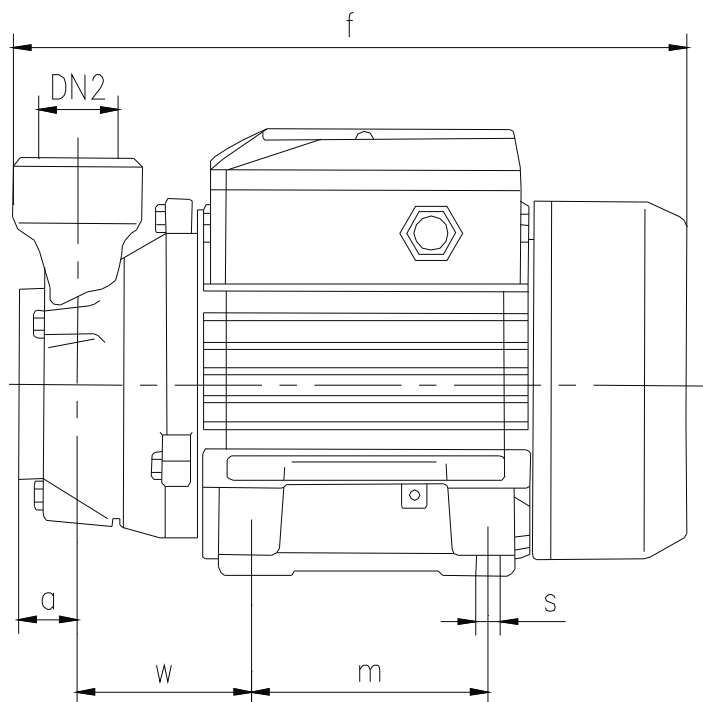
- 2 years subject to terms and conditions

CHARACTERISTIC CURVES AND PERFORMANCE DATA

50 Hz n=2850 rpm Hs=0 m



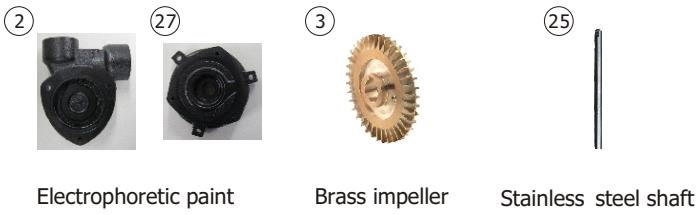
Model		Power		Q	Flow rate Q											
Single-phase	Three-phase	KW	HP		m³/h	0	0.3	0.6	0.9	1.2	1.5	1.8	2.1	2.4	2.7	3
					l/min	0	5	10	15	20	25	30	35	40	45	50
MQP60	MQ60	0.37	0.50	H m	40	38	34	29	24	20	15	10	5			
MQP70	MQ70	0.55	0.75		65	60	51	52	44	37	30	22	17	12	8	
MQP80	MQ80	0.75	1		70	65	60	55	50	46	40	36	31	26	22	



Model		Openings		Dimensions(mm)										
Single-phase	Three-phase	DN1	DN2	a	f	h	h1	i	l	m	n	n1	w	s
MQP60	MQ60	1"	1"	21	229	155	112	81	141	90	121	100	65	7
MQP70	MQ70	1'	1'	22	256	180	127	91	164	103	137	110	66	7
MQP80	MQ80	1"	1"	24	272	180	132	95	165	103	137	110	77	7

Model	Piece	GW(kg)	NW(kg)	Volume(m ³)	L(cm)	W(cm)	H(cm)
MQP60	1	6	5.7	0.007	28.00	14.50	17.50
MQP70	1	9	8.6	0.010	29.00	17.00	20.80
MQP80	1	10.6	10.2	0.011	30.00	17.00	20.80

POS. COMPONENT	ADVANTAGE
----------------	-----------



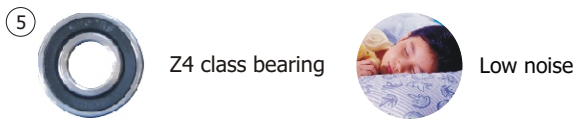
Anti-rust system

- a. Use electrophoretic paint to ensure no rust
- b. To provide more clean water
- c. To ensure long life



Powerful motor system

- a. To ensure the high power and lowest temperature rise
- b. Using thermal protection device to protect the motor
- c. To ensure high head, large flow and long life



Low noise system

- Low noise system
- a. using Z4 class bearing to ensure lowest noise
- b. to ensure long using-life

