

**Limits of use**

- Ambient temperature up to +55°C
- Liquid temperature up to +60°C
- PH value of liquid between 6.5-8.5
- Power: 50hz, single-phase 220v, three-phase 380v, fluctuated up and down 10%

**Features**

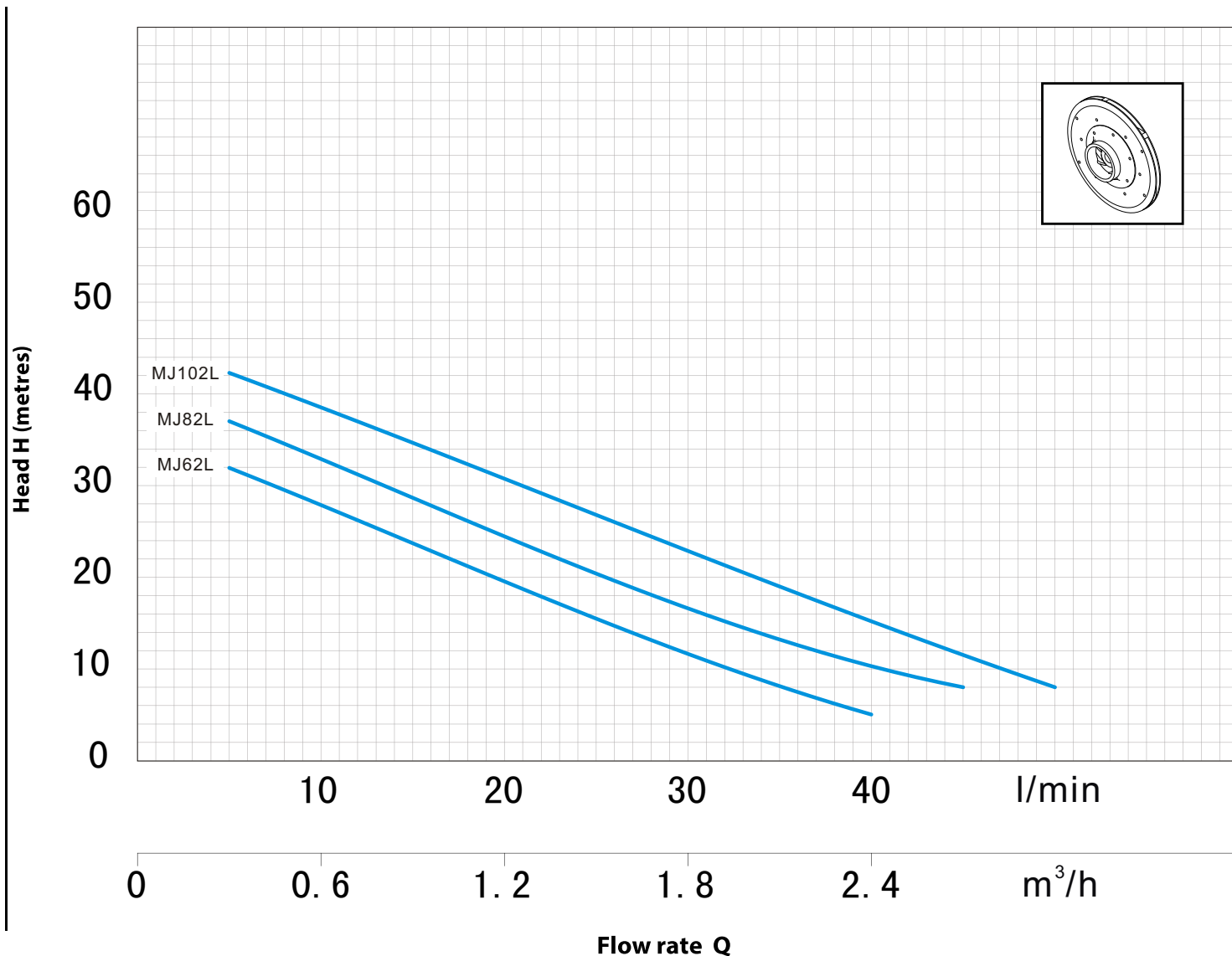
- Build-in ejector design to make this kind pump getting higher head compare with centrifugal pumps.
- Big pump casing design to make this kind pump getting self-priming function and getting relatively more suction head.
- With the adoption of cast iron diffuser and ejector to make this pump be used without the risk of broken and long using life;
- Can supply S/S ,brass impeller for different use.

**Application**

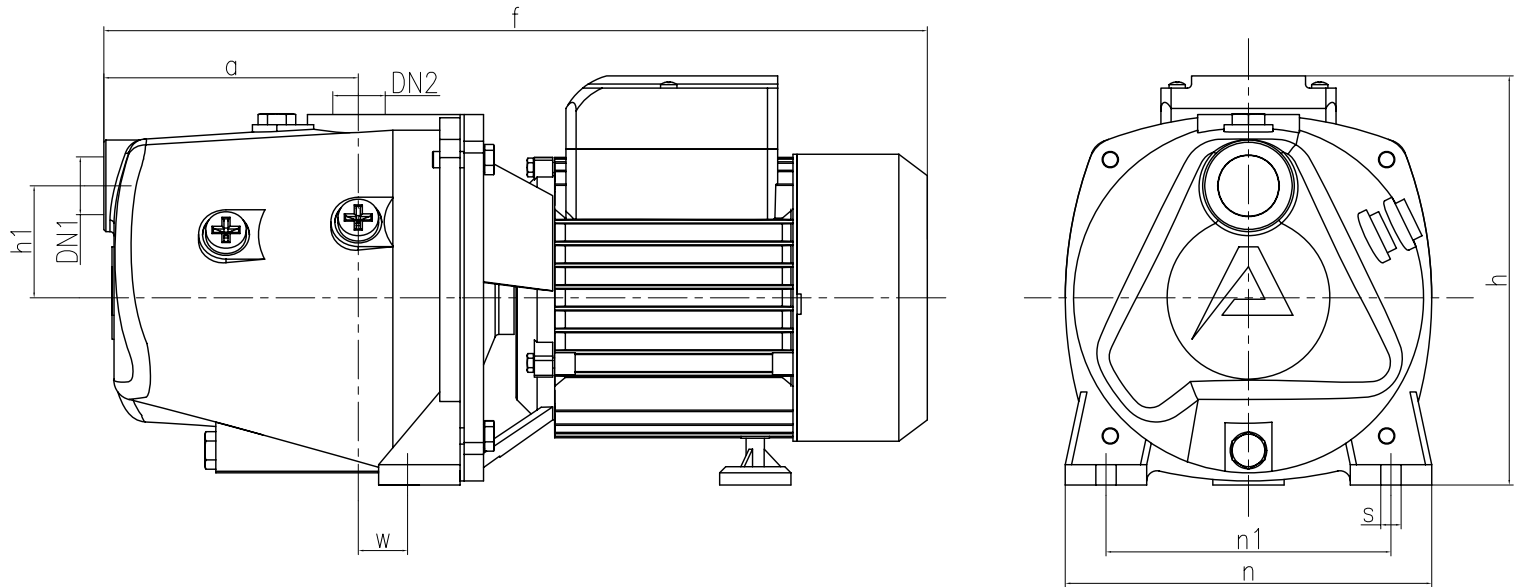
- Be used to delivery the clean water without the abrasive particles
- Be used to clean or cool the machine tools with high pressure
- Be used to pump the water for the industrial or house use from the well
- Be used to boost the water in pressurization system

**Warranty**

- 2 years subject to terms and conditions

**CHARACTERISTIC CURVES AND PERFORMANCE DATA**
**50 Hz n=2850 rpm Hs=0 m**


Model		Power		Q	m³/h	0	0.6	0.9	1.2	1.5	1.8	2.1	2.4	2.7	3.0
Single-phase	Three-phase	kW	HP		l/min	0	10	15	20	25	30	35	40	45	50
MJ62L	-	0.37	0.5	H m	36	28	23	20	17	15	13	5			
MJ82L	-	0.6	0.8		41	32	28	25	22	20	17	15	9		
MJ102L	-	0.75	1		46	37	34	31	28	25	23	20	17	8	



Model		Openings		Dimensions(mm)								
Single-phase	Three-phase	DN1	DN2	a	f	h	h1	i	n	n1	w	s
MJ62L	-	1"	1"	140	386	188	132	182	180	140	12	10
MJ82L	-	1"	1"	140	415	201	132	182	180	140	12	10
MJ102L	-	1"	1"	140	415	201	132	182	180	140	12	10

Model	Piece	GW(kg)	NW(kg)	Volume(m3)	L(cm)	W(cm)	H(cm)
MJ62L	1	14.1	13.6	0.105	53.0	34.0	58.5
MJ82L	1	15	14.5	0.105	53.0	34.0	58.5
MJ102L	1	15.8	15.3	0.105	53.0	34.0	58.5

## POS. COMPONENT

## ADVANTAGE

24



Thermostability  
Capacitor

- Thermostability system
  - a. Capacitor with 85°C high temperature film
  - b. Can be used under sun exposure
  - c. Can be used under high temperature environment

18



Rotor with shaft  
(Stainless steel shaft)

- Powerful motor system
  - a. To ensure the high power and lowest temperature rise
  - b. Using thermal protection device to protect the motor
  - c. Big flow and long using-life
  - d. Wide voltage rang design motor can be used under 170 - 250 V

16

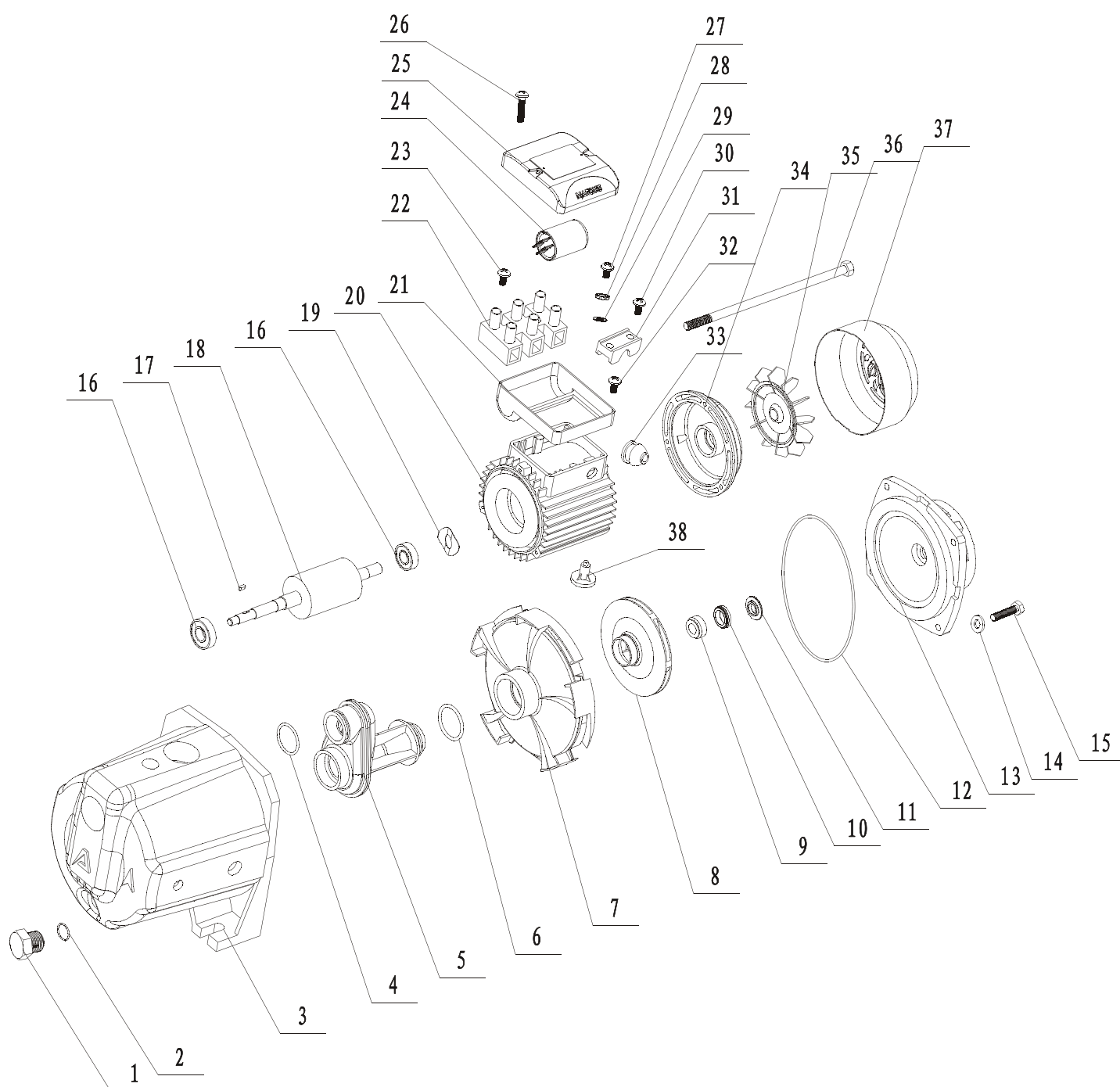


Z4 class bearing



Low noise

- Low noise system
  - a. Using Z4 class bearing to ensure lowest noise
  - b. To ensure long using-life



# MARQUIS Typical Water Supply System

*With MARQUIS water pumps, you can be assured of our globally acclaimed MARQUIS centrifugal pumps offering superior quality and safety*

