



OPENEX MECHANICAL TECHNOLOGY LTD.  
Unit 2205, No170 East Tapu Rd., Xiamen, China 361008  
[Tel:+86 592 5580601](tel:+865925580601) [Tel:+86 592 5331844](tel:+865925331844)



Openex Mechanical Technology Ltd. Email:bell@openex.com.cn, <http://www.metalfabricationcn.com/>



OPENEX MECHANICAL TECHNOLOGY LTD.  
Unit 2205, No170 East Tapu Rd., Xiamen, China 361008  
[Tel:+86 592 5580601](tel:+865925580601) Fax [Tel:+86 592 5331844](tel:+865925331844)

## TUG BOAT





OPENEX MECHANICAL TECHNOLOGY LTD.  
Unit 2205, No170 East Tapu Rd., Xiamen, China 361008  
[Tel:+86 592 5580601](tel:+865925580601) Fax [Tel:+86 592 5331844](tel:+865925331844)

## TUG BOAT 6600HP



Openex Mechanical Technology Ltd. Email:[bell@openex.com.cn](mailto:bell@openex.com.cn), <http://www.metalfabricationcn.com/>



OPENEX MECHANICAL TECHNOLOGY LTD.  
Unit 2205, No170 East Tapu Rd., Xiamen, China 361008  
[Tel:+86 592 5580601](tel:+865925580601) Fax [Tel:+86 592 5331844](tel:+865925331844)

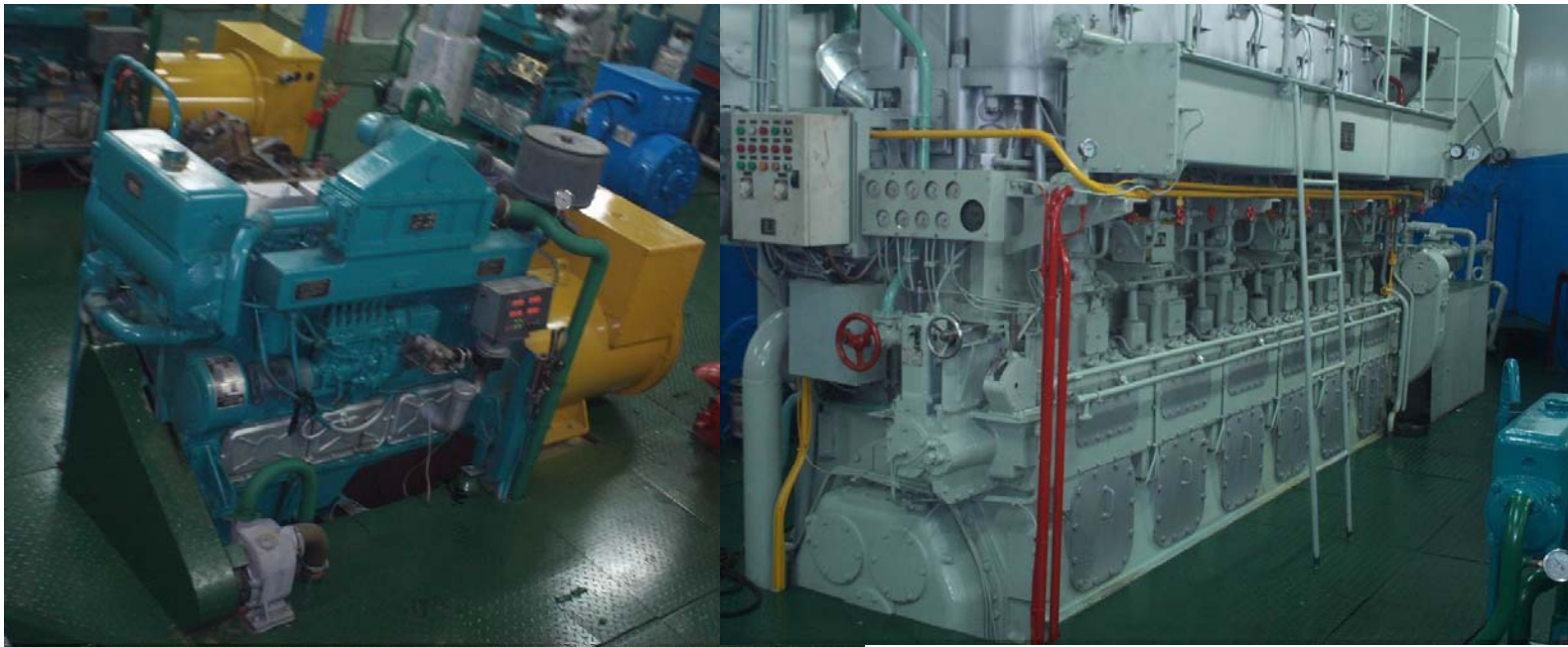
## Passenger Boat





OPENEX MECHANICAL TECHNOLOGY LTD.  
Unit 2205, No170 East Tapu Rd., Xiamen, China 361008  
[Tel:+86 592 5580601](tel:+865925580601) Fax [Tel:+86 592 5331844](tel:+865925331844)

## Engine for Boat





OPENEX MECHANICAL TECHNOLOGY LTD.  
Unit 2205, No170 East Tapu Rd., Xiamen, China 361008  
[Tel:+86 592 5580601](tel:+865925580601) Fax [Tel:+86 592 5331844](tel:+865925331844)

### Galley for Boat





OPENEX MECHANICAL TECHNOLOGY LTD.  
Unit 2205, No170 East Tapu Rd., Xiamen, China 361008  
[Tel:+86 592 5580601](tel:+865925580601) Fax [Tel:+86 592 5331844](tel:+865925331844)

### Control Room for Boat





OPENEX MECHANICAL TECHNOLOGY LTD.  
Unit 2205, No170 East Tapu Rd., Xiamen, China 361008  
[Tel:+86 592 5580601](tel:+865925580601) Fax [Tel:+86 592 5331844](tel:+865925331844)

## Boat Production Site 1







OPENEX MECHANICAL TECHNOLOGY LTD.  
Unit 2205, No170 East Tapu Rd., Xiamen, China 361008  
[Tel:+86 592 5580601](tel:+865925580601) Fax [Tel:+86 592 5331844](tel:+865925331844)

## Boat Production Site 2

