

**KITO**  
Beyond Your Imagination



GUANGDONG KITO CERAMICS GROUP CO.,LTD.

Building T6, Smart City Jihua 1st Road, Chancheng Dist., FoshanGuangdong 528000,China  
Tel:+86 757 82533869 | Fax:+86 757 82533866 | Email:thankyou@kito.cn

[www.kito.cn](http://www.kito.cn)

**KITO**  
**2CM**  
AN OUTDOOR FAVORITE





# INDEX

01~02

ABOUT THE BRAND

05~16

9 APPLICATIONS

17~18

8 COLLECTIONS

03~04

OUR DIFFERENTIATION &  
4 KEY METHODS OF APPLICATION

19~20

PARAMETER INFO



2CM



# Why KITO BEYOND YOUR IMAGINATION

## LEADING GLAZED TILE MANUFACTURER

KITO is a specialized porcelain tile manufacturer in Foshan, China, with 15 years of experience in producing top-grade glazed porcelain tiles. The annual output is more than 20 million M2

## POWERFUL R&D TEAM SUPPORT

More than 300 engineers and experts including Italian designers  
314 cases awarded the national patents

## RICH PRODUCT RANGE

Size: from 148x398mm (6"x16") to 1600x3200mm (64"x128")  
Thickness: 9.2mm to 20mm  
Surface: full polished, honed, lappato, matte, satin and rough finish  
Techniques: screen printing, rotogravure printing, ink-jet printing

## TQC SYSTEM

In accordance with EN14411:2016 standard.



2018 China 500 Most  
Valuable Brands



Three Star Certification Of  
Green Building Materials



In Accordance With  
EN14411:2016 Standard



A recognized world leader in testing  
inspection and certification services (TIC)



SGS is recognized as the global  
benchmark for quality and integrity



# OUR DIFFERENTIATION

## Anti-slip R11

KITO 2CM outdoor porcelain tiles reach R11 which provides traction close to that of natural stone. R12 also available for customization



## High Breaking Strength

KITO 2CM outdoor porcelain tiles reach a breaking strength of 10,200N. Similar natural stone would be 4cm thick to have the same breaking strength.



2CM

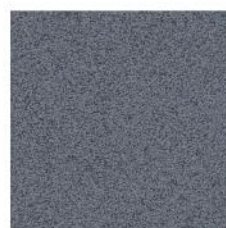
## Full Body

Advanced technologies such as full body tiling, in addition to high pressure and high temperature treatment, are adopted in the manufacturing process. As a result, 2CM outdoor porcelain tiles has high breaking strength, low water absorption ( $\leq 0.5\%$ ) and class 3 abrasion resistance.



## Natural Stone Texture

KITO 2CM outdoor porcelain tiles are full 20mm in thickness, which provides an elegant natural stone texture.



# 4 KEY METHODS OF APPLICATION

EASY TO INSTALL AND MAINTAIN

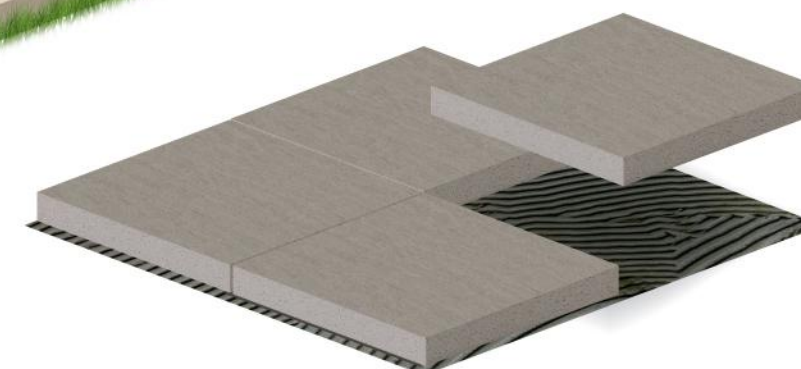
Laid on gravel



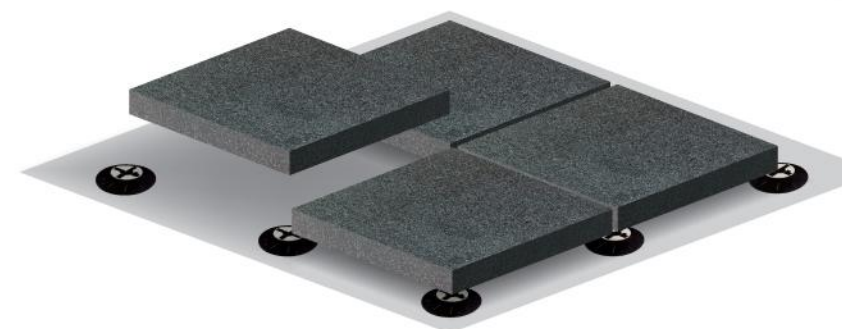
Laid on grass



Laid on mortar



Laid on pedestal







## 9 APPLICATIONS

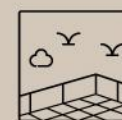
KITO 2CM tiles are suitable for various outdoor locations, including swimming pool, balconies and so on.



ON  
GRASS



ON  
GRAVEL



FRONT &  
BACK YARD



OUTDOOR  
APPLICATION



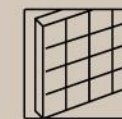
SWIMMING  
POOL



TRAFFIC  
SITE



GARAGE &  
PARKING



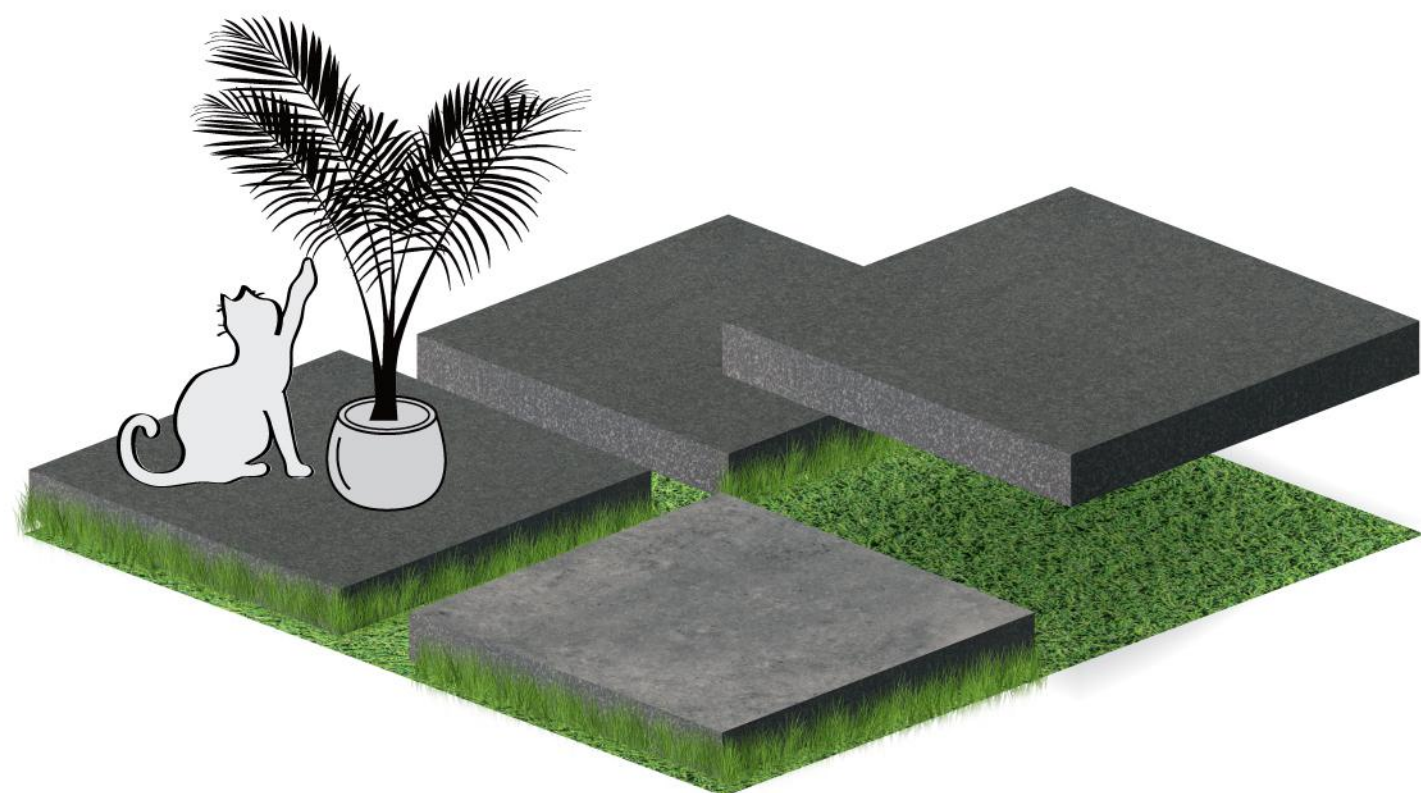
EXTERNAL  
FACADES



STAIRCASE  
STEPS

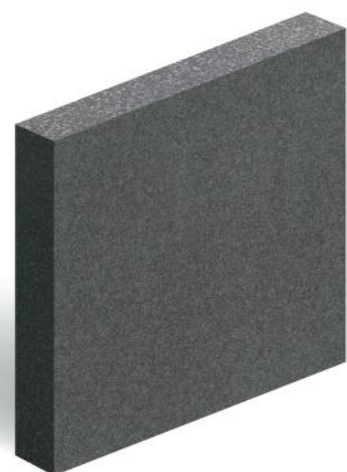


# ON GRASS



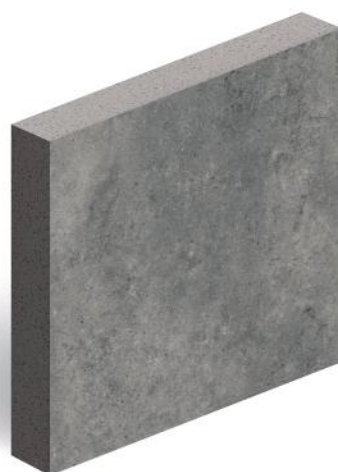
## Basalt Stone

K0606529DAZ  
600×600×20mm



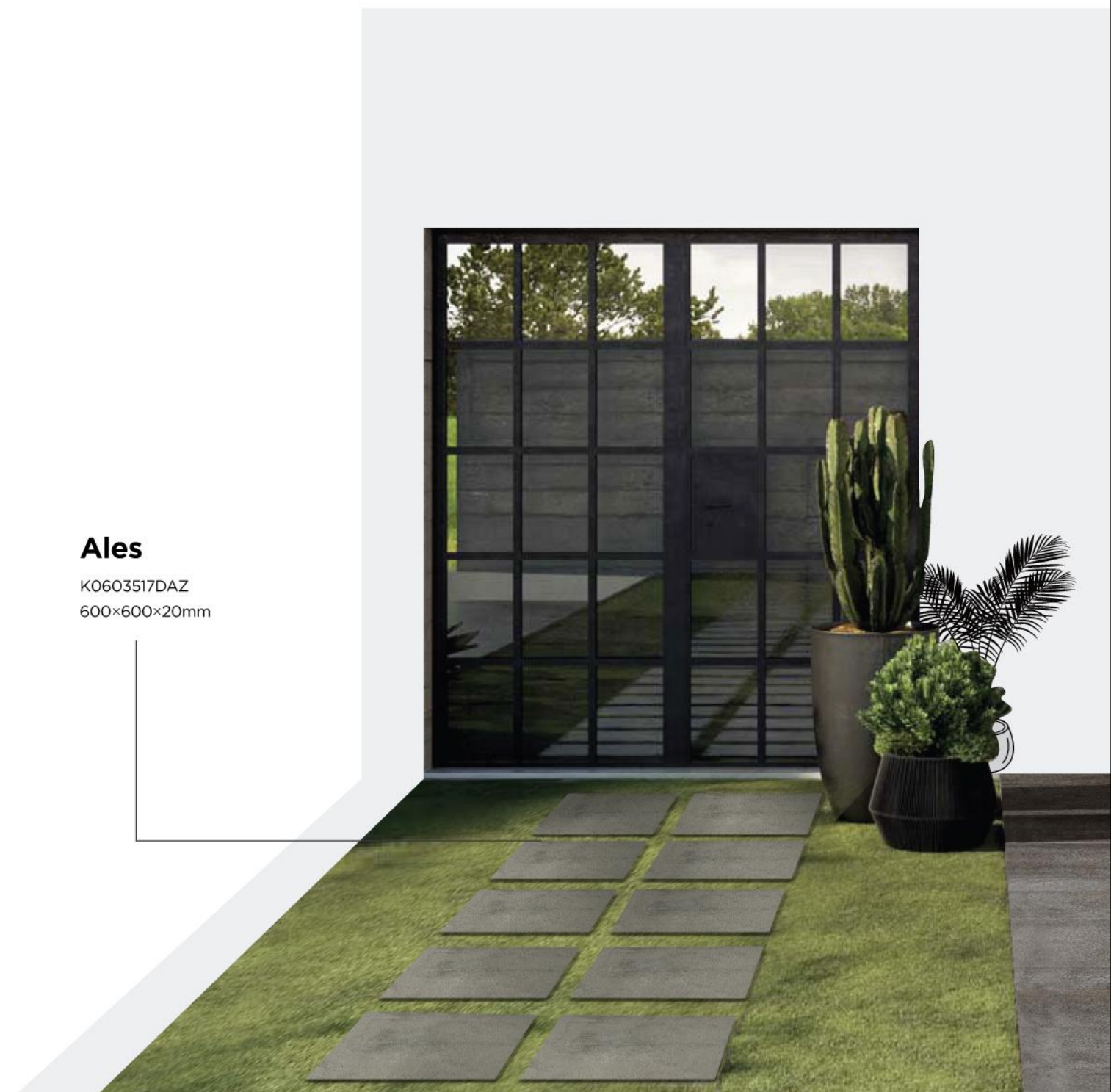
## Cement

K0606419DAZ  
600×600×20mm



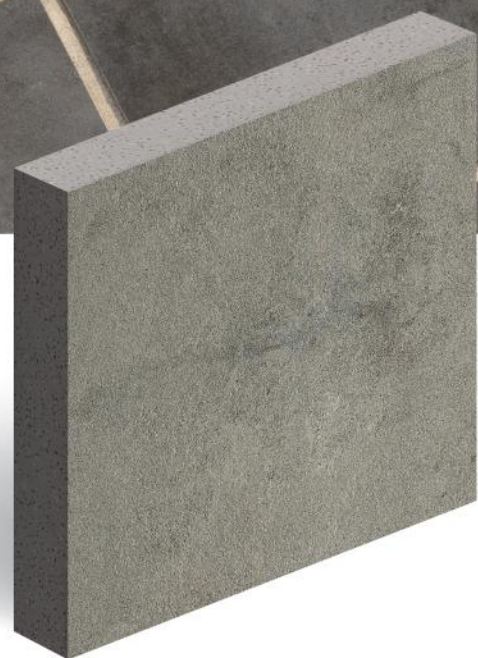
## Ales

K0603517DAZ  
600×600×20mm





# ON GRAVEL



## Ales

K0603517DAZ  
600×600×20mm

# FRONT & BACK YARD



## Cassero

K0603523DAZ  
600×600×20mm



## Cassero

K0603520DAZ  
600×600×20mm



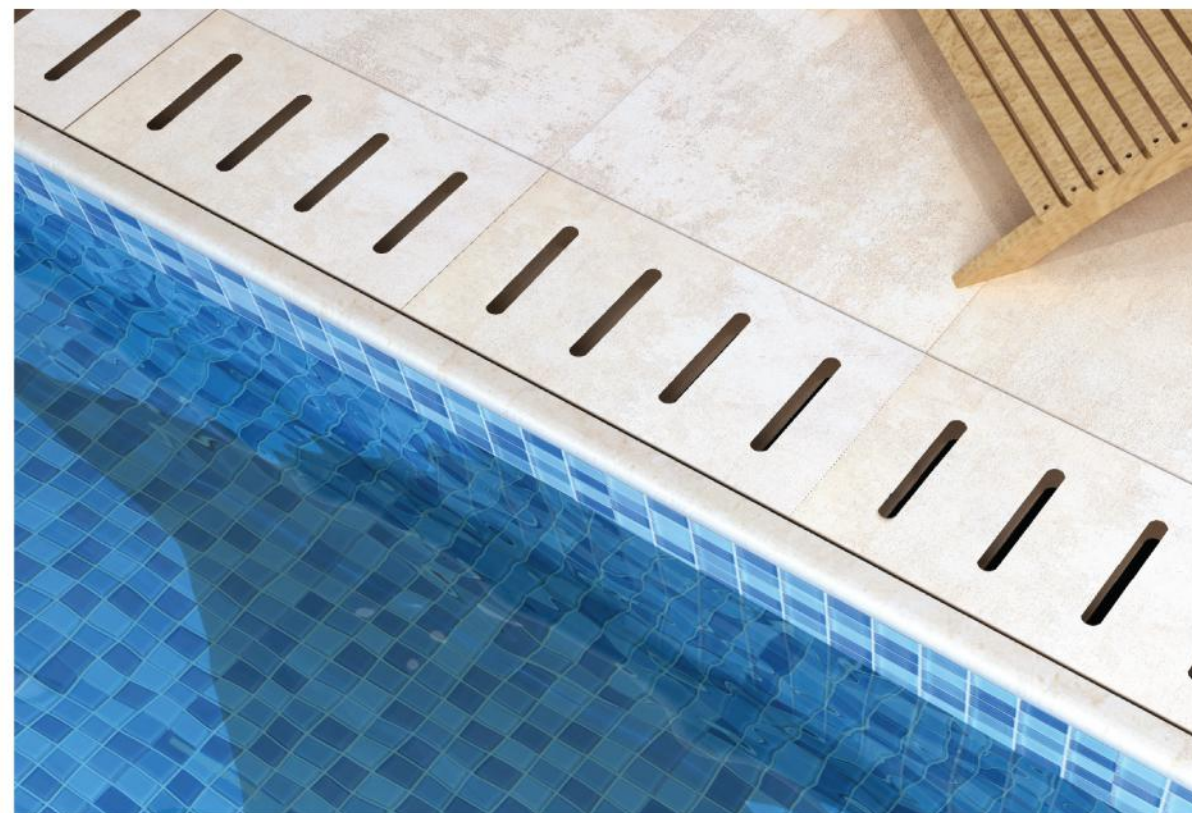
# OUTDOOR



## Pietra Carsica

K0603388DAZ  
600×600×20mm

# SWIMMING POOL



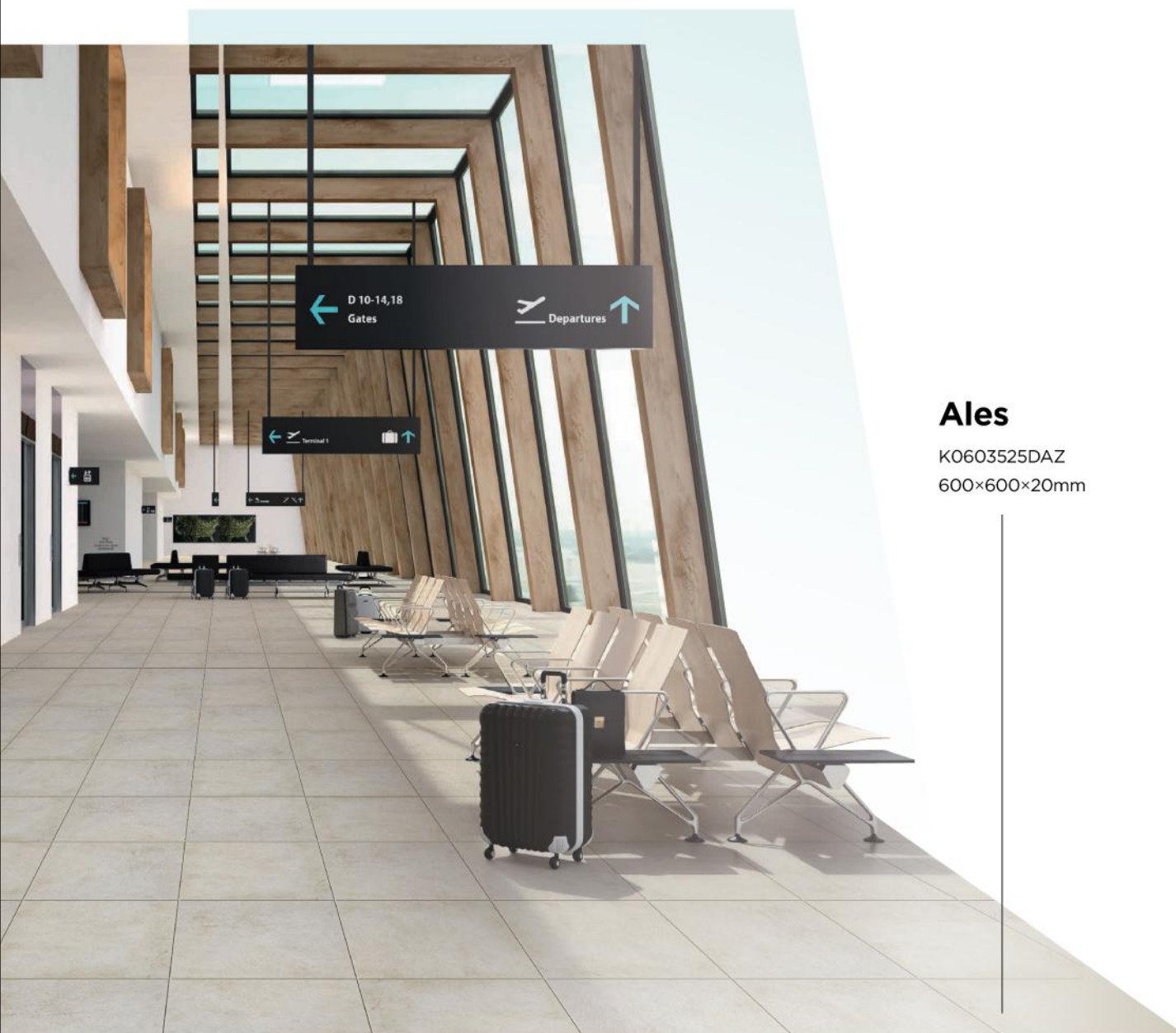
## Cement

K0603704DAZ  
600×600×20mm





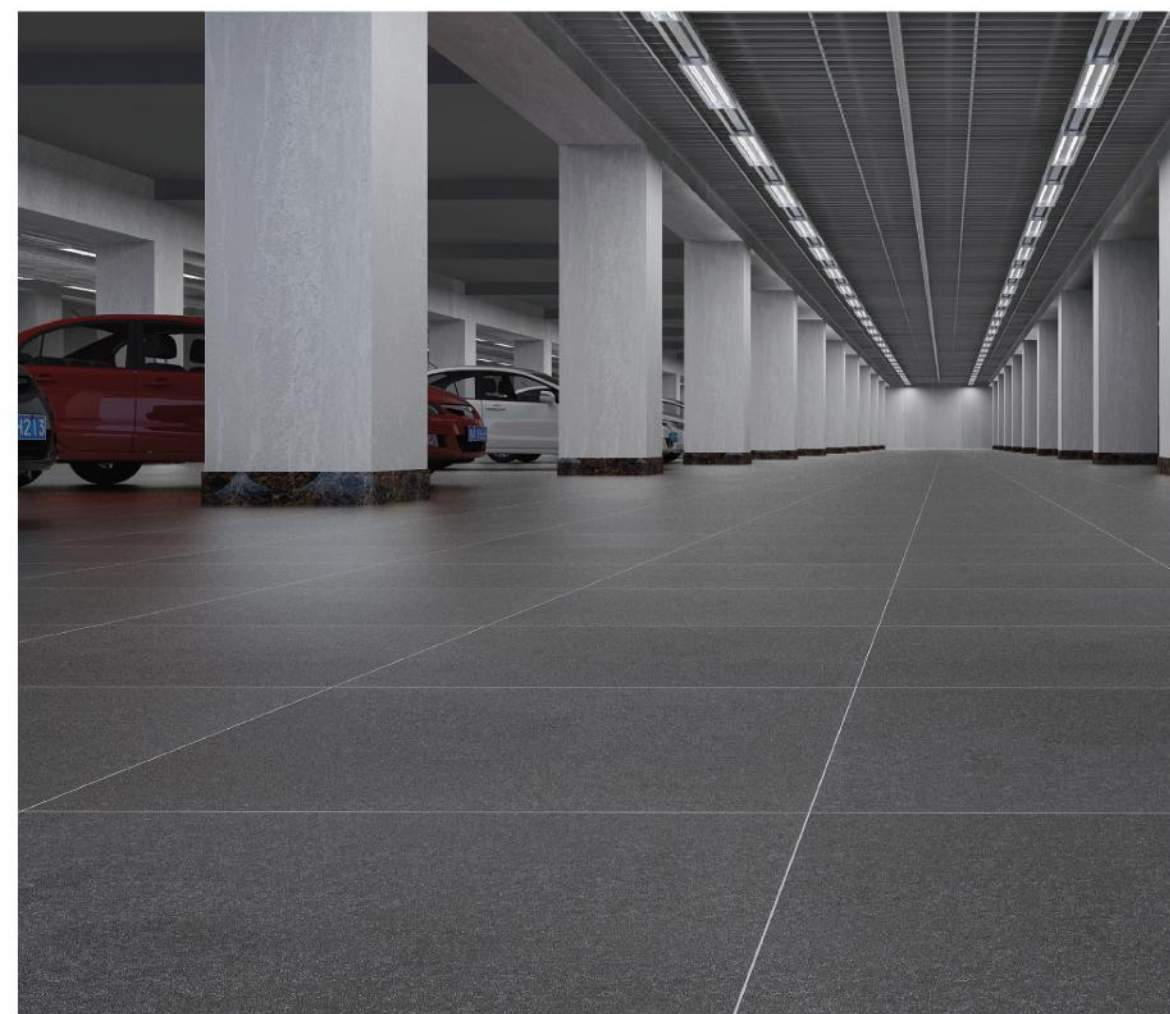
# TRAFFIC SITE



## Ales

K0603525DAZ  
600×600×20mm

# GARAGE & PARKING



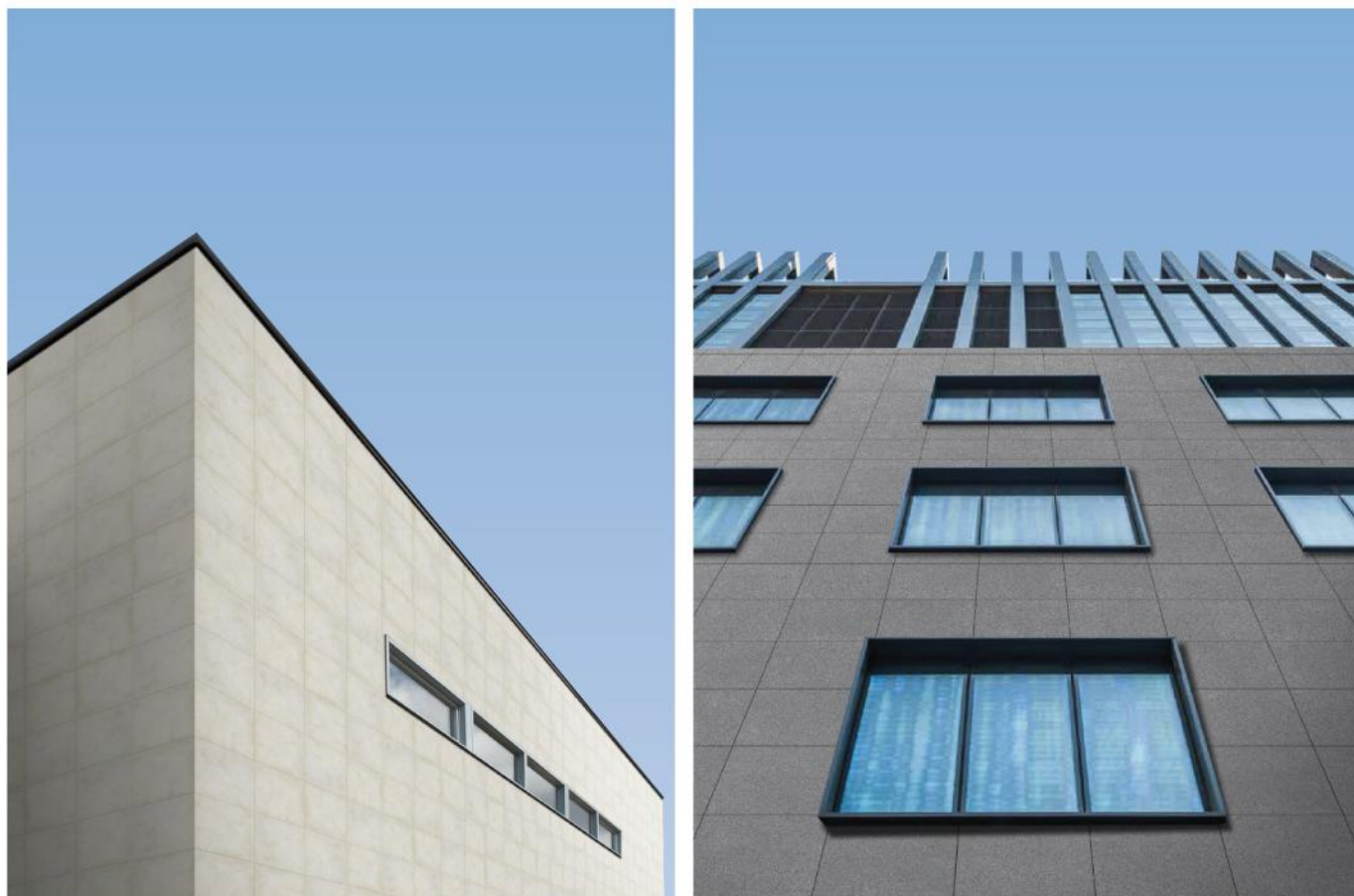
## Basalt Stone

K0606033DAZ  
600×600×20mm





# EXTERNAL FACADES



**Ales**

K0603525DAZ  
600×600×20mm



**Basalt Stone**

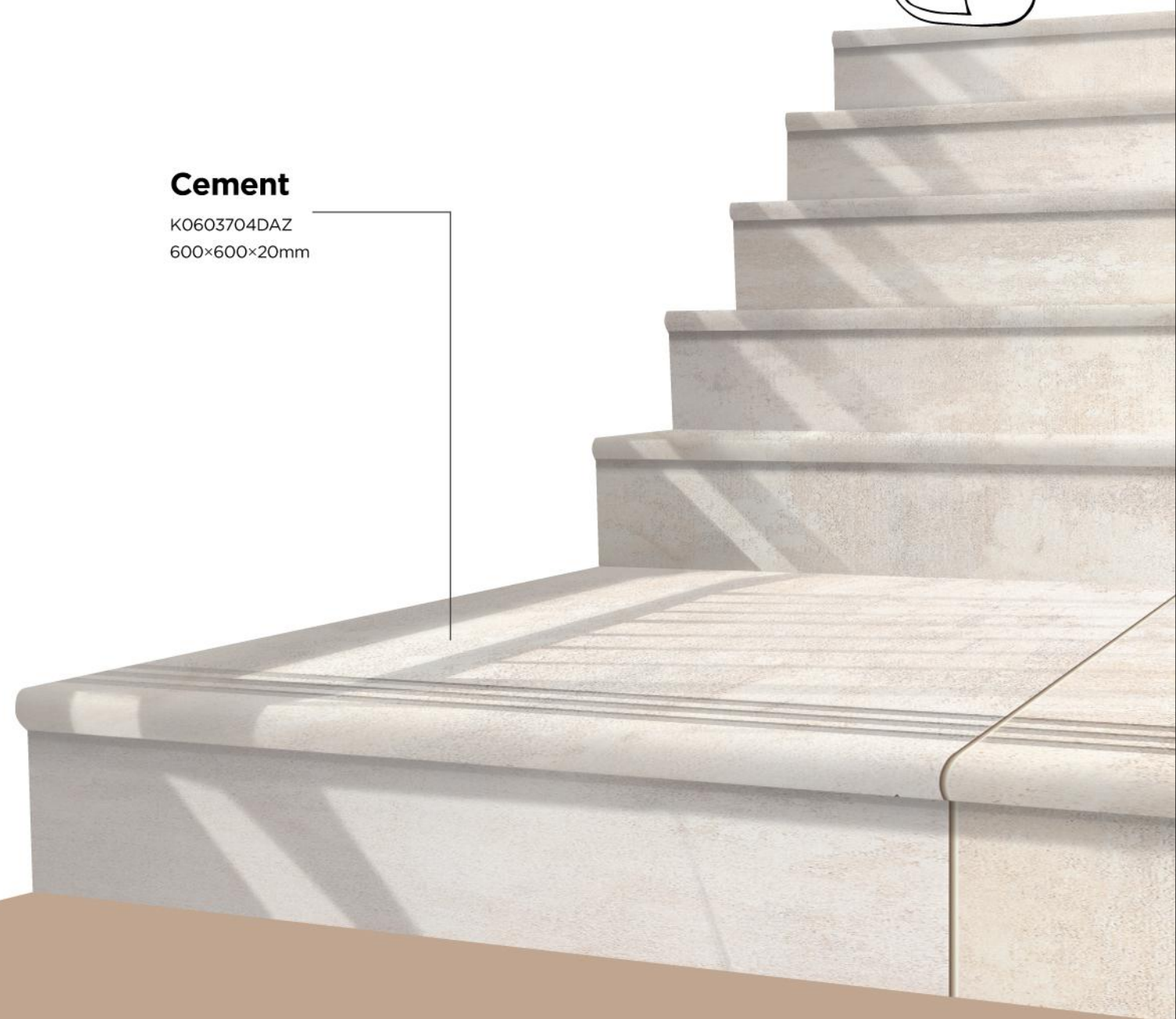
K0606503DAZ  
600×600×20mm

# STAIRCASE STEPS



**Cement**

K0603704DAZ  
600×600×20mm






# 8 COLLECTIONS

## Ales


600×600×20mm 1200×600×11.5mm 600×600×10mm \* Avaliable size: 1200×600×20mm




K0603516DAZ  
10




K0603517DAZ \*



K0603518DAZ  
10



K0603519DAZ  
10



K0603525DAZ \*

## Cassero

600×600×20mm \* Avaliable size: 1200×600×11.5mm 600×600×10mm



K0603520DAZ \*  
12



K0603522DAZ \*  
12



K0603523DAZ \*  
12

## Pietra Carsica

600×600×20mm \* Avaliable size: 1200×600×11.5mm 600×600×10mm



K0603388DAZ \*  
20

## Terrazzo

600×600×20mm



K0606801DAZ  
4

## Sand Stone

600×600×20mm




K0606527DAZ  
5



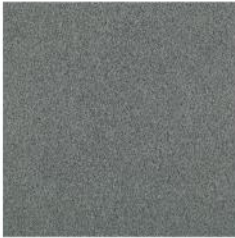
K0606528DAZ  
1

## Basalt Stone


600×600×20mm \* Avaliable size: 1200x600x20mm



K0606033DAZ \*  
1




K0606503DAZ \*  
1




K0606529DAZ  
1

## Cement

600×600×20mm



K0603704DAZ  
3



K0606419DAZ  
7

## Slate Stone

600×600×20mm




K0606418DAZ  
1








2CM

## TECHNICAL DATA

	Thickness	20mm
	Water Absorption	Less than 0.5%
	Breaking Strength	≥10200N
	Modulus of Rupture	Minimum ≥35N/mm <sup>2</sup>
	Static Coefficient of Friction	Dry: 0.87, Wet: 0.73
	DCOF	0.52
	PEI	Class 4
	Slipperiness	R11

# PARAMETER INFO

## PACKING INFO

	Ctn size	600×600×20mm	1200×600×20mm
	Pcs/Ctn	2	1
	M <sup>2</sup> /Ctn	0.72	0.72
	Kg/Ctn	34	34

	Pallet size	1.1×1.1m	1.1x1.1m
	Ctn/Pal	40	31
	M <sup>2</sup> /Pal	28.8	22.32
	Kg/Pal	1360	1054

	Ctn/Cont	800	775
	Pcs/Cont	576	558
	Kg/Cont	27000	26350