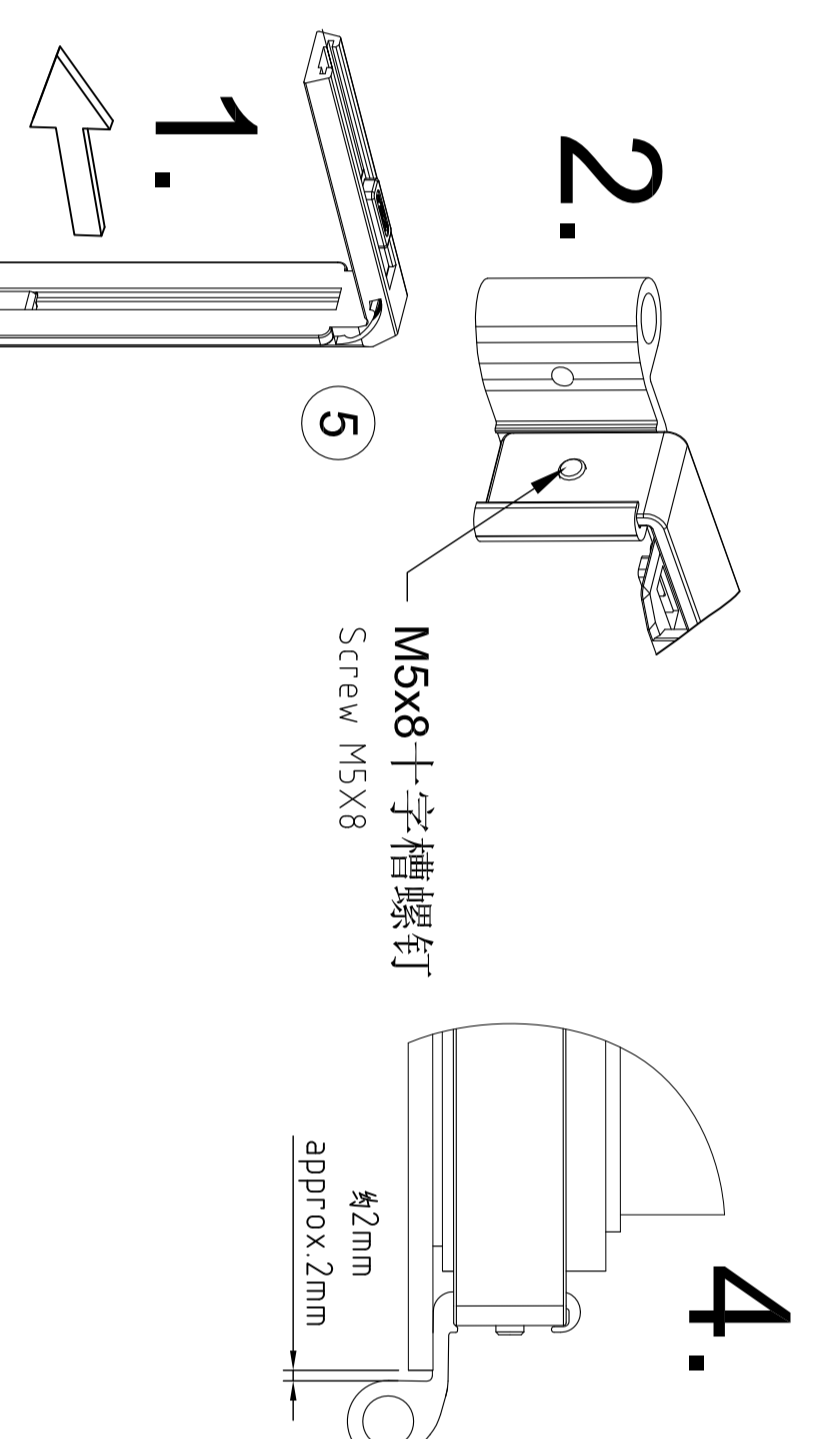


可使用4mm内六角扳手对摇臂进行调整
Adjustment of stay arm with Allen key 4 mm



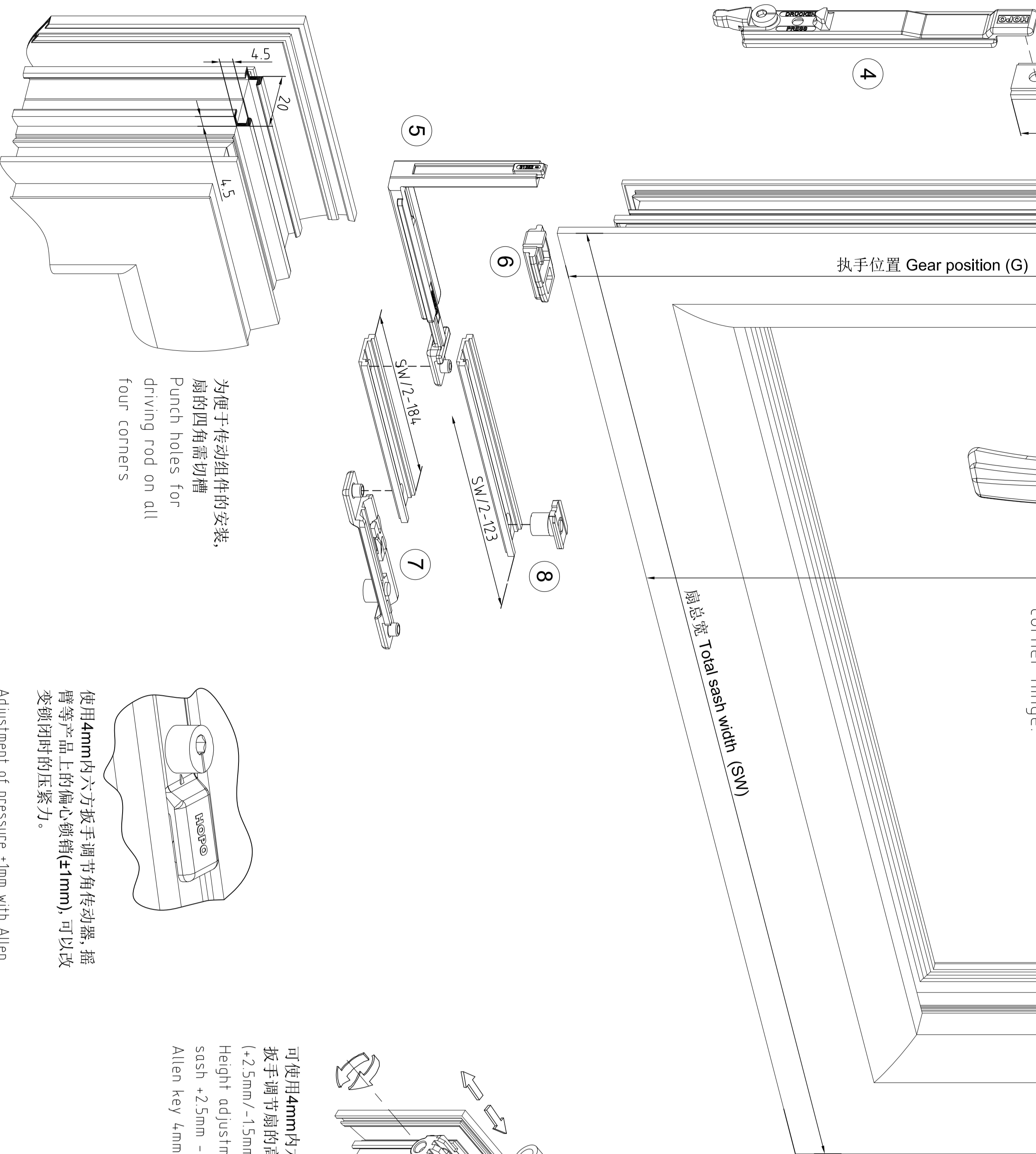
安装执手和误操作保险
Mount the geared handle and wrong operation safety device



扇上件的安装:
1. 插入中间锁并将角传动器固定
2. 将摇臂装入摇臂合页并将其锁紧。
3. 将摇臂装入型材。
4. 将摇臂合页调整到如图所示的位置
5. 通过锁紧螺钉将摇臂固定。
6. 将传动组件装入型材并将角传动器固定。
7. 安装执手和误操作保险。
8. 安装角页座和角页属件, 并将其用螺钉锁紧。

Assembly on SASH

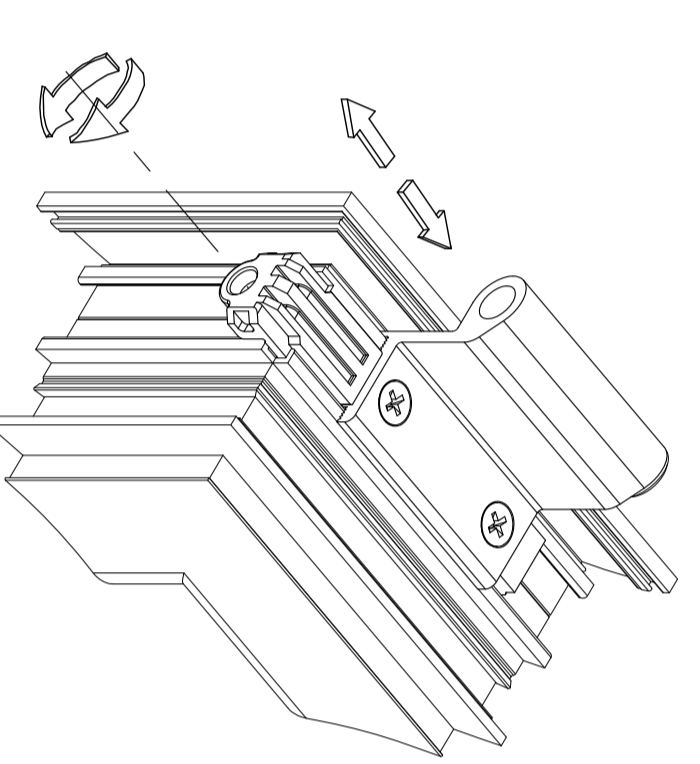
1. Insert middle lock and clamp corner transmission
2. Push stay arm hinge into stay arm and secure by turning the stay arm lock
3. Insert stay arm hinge on sash overlap
4. Locate stay arm hinge on sash overlap
5. Fix the stay by tightening the punching screw until it is firm.
6. Insert the locking parts and clamp the corner transmission.
7. Mount the geared handle and wrong operation safety device.
8. Insert clamping angle and screw on corner hinge.



执手位置 Gear position (G)

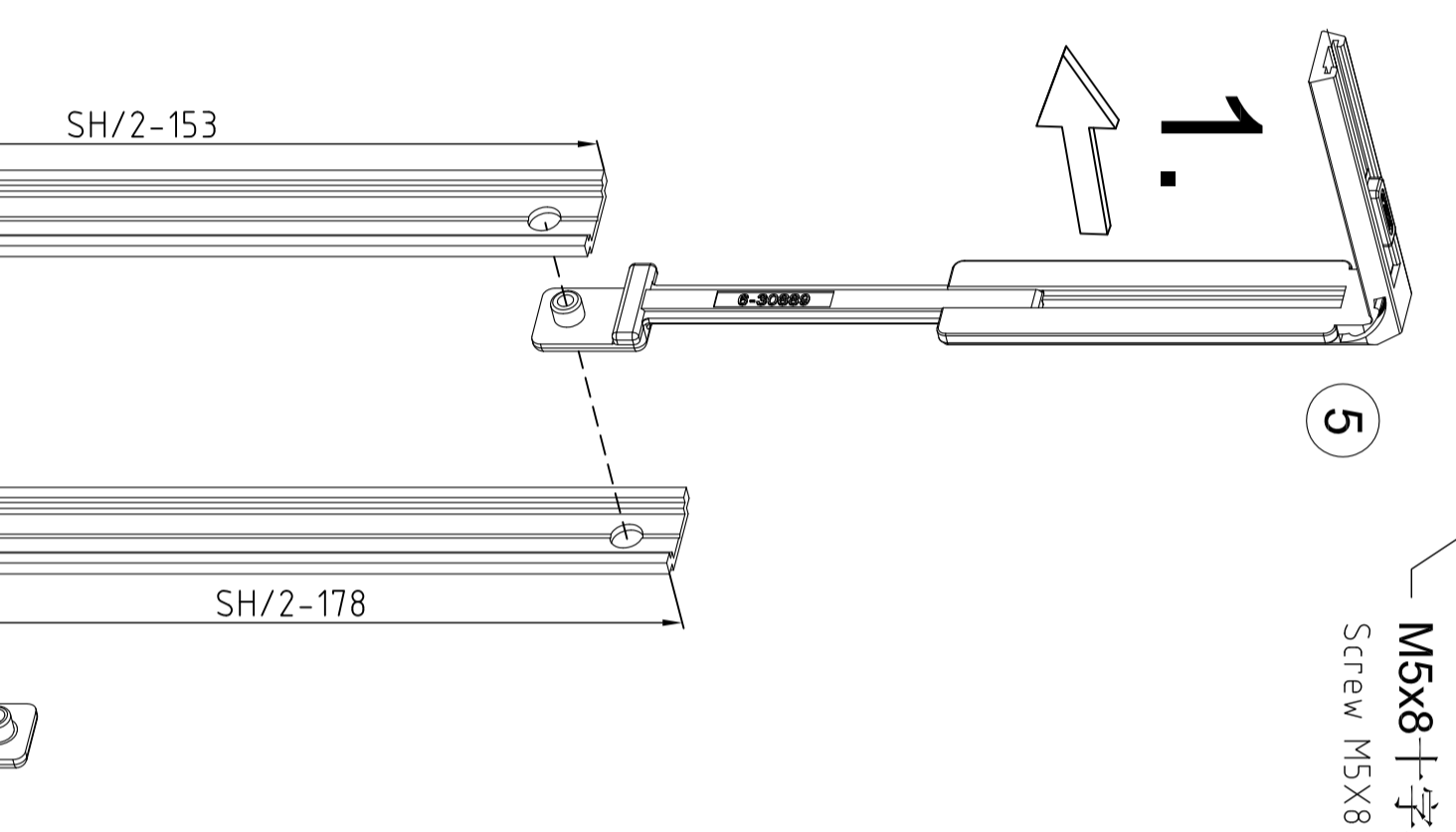
扇总高 Total sash height (SH)

扇总宽 Total sash width (SN)



可使用4mm内六角扳手调节角传动器、摇臂等产品上的偏心螺栓(1mm), 可以改变密封时的压紧力。

Adjustment of pressure shim with Allen key lam on corner transmission, stay arm and locking pin element



1. Push the axle plate and the corner bearing axle into the corner housing

2. Position the stay arm bearing in the corner of the frame and clamp

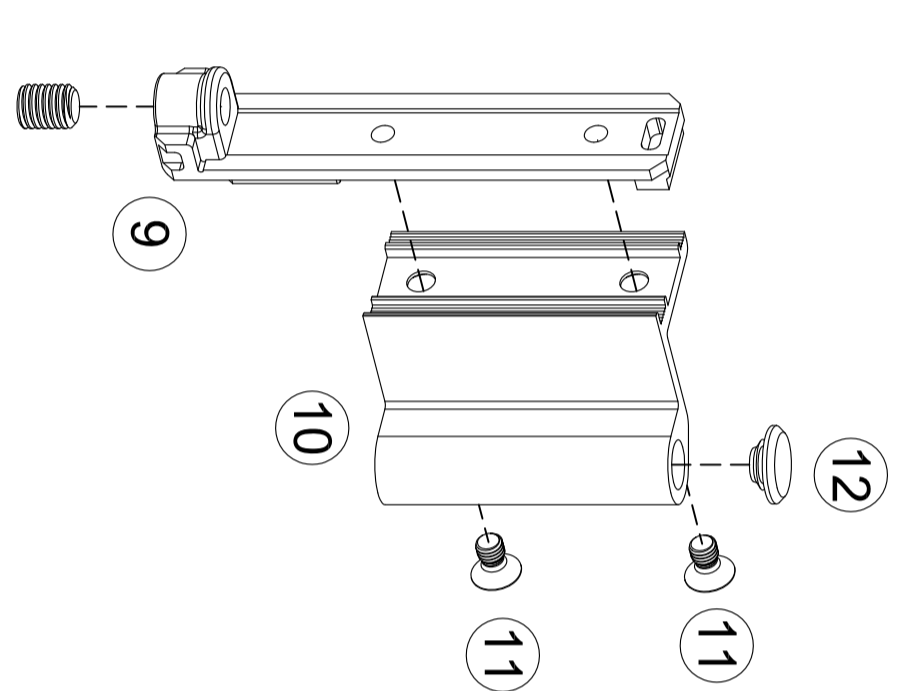
3. Position and clamp Allen key 25 mlocking plates accordingly to the drawing

4. Completion

Hang the sash on the corner bearing

Push home fully stay arm axle from below

Tighten threaded pins in corner and stay arm hinge and push on cover



1. Push the axle plate and the corner bearing axle into the corner housing

2. Position the stay arm bearing in the corner of the frame and clamp

3. Position and clamp Allen key 25 mlocking plates accordingly to the drawing

4. Completion

Hang the sash on the corner bearing

Push home fully stay arm axle from below

Tighten threaded pins in corner and stay arm hinge and push on cover

1. Push the axle plate and the corner bearing axle into the corner housing

2. Position the stay arm bearing in the corner of the frame and clamp

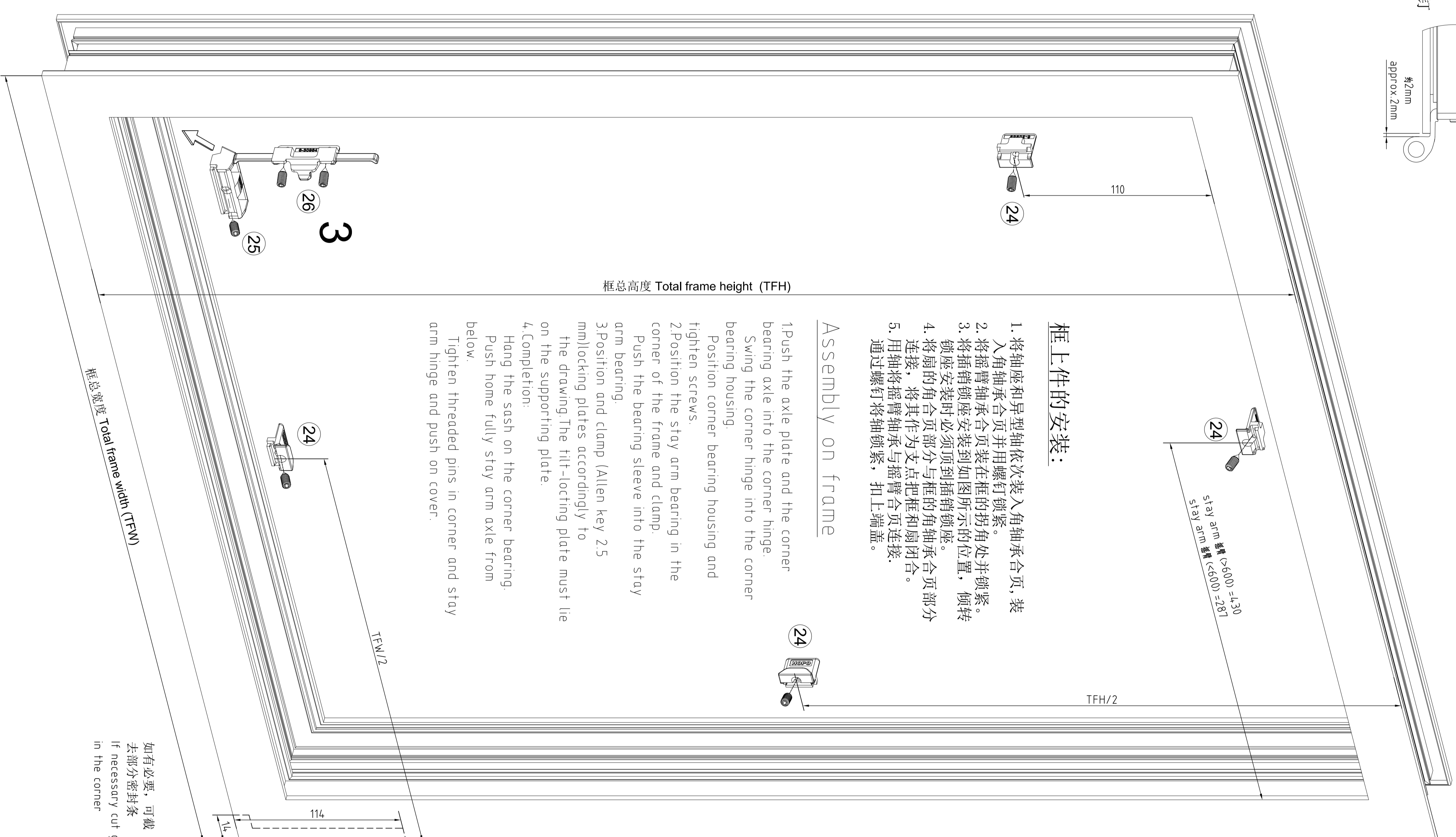
3. Position and clamp Allen key 25 mlocking plates accordingly to the drawing

4. Completion

Hang the sash on the corner bearing

Push home fully stay arm axle from below

Tighten threaded pins in corner and stay arm hinge and push on cover



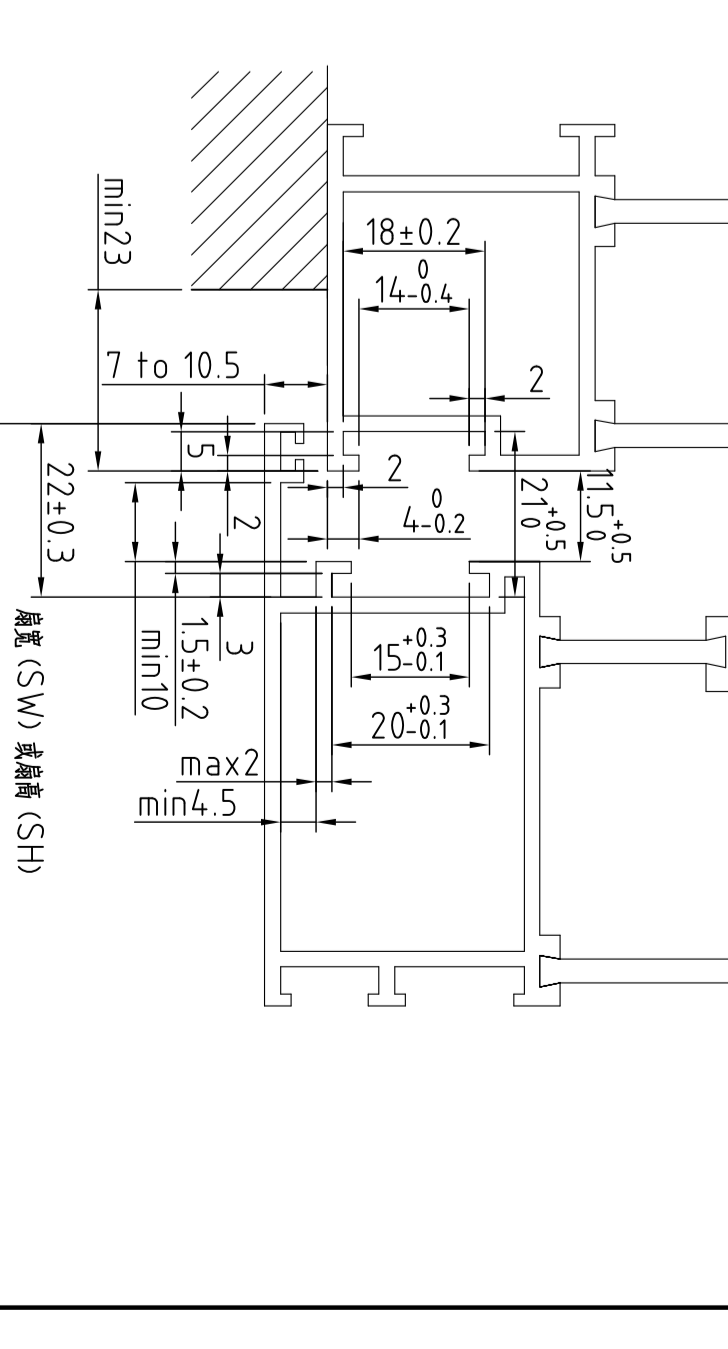
框上件的安装:

1. 将轴座和异型轴依次装入角轴承合页, 装入角轴承合页并用螺钉锁紧。
2. 将摇臂轴承安装在框的拐角处并锁紧。
3. 将摇臂轴承安装在框的拐角处并锁紧。将摇臂安装在如图所示的位置。倾斜时, 轴承必须连接到摇臂的轴上。
4. 将扇的角页部分与框的角页部分连接, 将其作为支点和把框和扇闭合。
5. 用轴座将摇臂轴承与摇臂合页连接。通过螺钉将轴锁紧, 扣上端盖。

Assembly on frame

1. Push the axle plate and the corner bearing axle into the corner housing
2. Position the stay arm bearing in the corner of the frame and clamp
3. Position and clamp Allen key 25 mlocking plates accordingly to the drawing
4. Completion
5. Hang the sash on the corner bearing
6. Push home fully stay arm axle from below
7. Tighten threaded pins in corner and stay arm hinge and push on cover

序号	产品名称	产品编号	数量	备注
1	合页部分	AH450.**	1	**代表颜色(黑、白、银)
2	摇臂合页	ASAB50.**	1	**代表颜色(黑、白、银)
3	摇臂轴座	ASAAS5000	1	**代表颜色(黑、白、银)
4	摇臂轴座套	ABSS5006	1	**代表颜色(黑、白、银)
5	塑料盖	ASAH50.**	1	**代表颜色(黑、白、银)
6	塑料盖套	APLS006	1	**代表颜色(黑、白、银)
7	角轴	ACBS5000	1	**代表颜色(黑、白、银)
8	角轴套	ACBAS5000	1	**代表颜色(黑、白、银)
9	角页底座	ACS5000	1	**代表颜色(黑、白、银)
10	角页底座套	ACHS5006	1	**代表颜色(黑、白、银)
11	角页底座套	ACHS5006	1	**代表颜色(黑、白、银)
12	传动部分	AD1000	1	**代表颜色(黑、白、银)
13	角传动座	ACT1000	1	**代表颜色(黑、白、银)
14	传动轴	APT1000	1	**代表颜色(黑、白、银)
15	轴套	APB1000	1	**代表颜色(黑、白、银)
16	角传动座	ACT1000	1	**代表颜色(黑、白、银)
17	角传动座	ACT1000	1	**代表颜色(黑、白、银)
18	角传动座	ACT1000	1	**代表颜色(黑、白、银)
19	角传动座	ACT1000	1	**代表颜色(黑、白、银)
20	角传动座	ACT1000	1	**代表颜色(黑、白、银)
21	角传动座	ACT1000	1	**代表颜色(黑、白、银)
22	角传动座	ACT1000	1	**代表颜色(黑、白、银)
23	角传动座	ACT1000	1	**代表颜色(黑、白、银)
24	角传动座	ACT1000	1	**代表颜色(黑、白、银)
25	角传动座	ACT1000	1	**代表颜色(黑、白、银)
26	角传动座	ACT1000	1	**代表颜色(黑、白、银)
27	角传动座	ACT1000	1	**代表颜色(黑、白、银)
28	角传动座	ACT1000	1	**代表颜色(黑、白、银)
29	角传动座	ACT1000	1	**代表颜色(黑、白、银)
30	角传动座	ACT1000	1	**代表颜色(黑、白、银)



框扇装配尺寸
Assembly dimensions
Total frame width TFW or Total frame height TFH
扇总宽 TFW 或 扇总高 TFH
如有必要, 可裁去部分密封胶
If necessary, cut gasket in the corner
Sash width SW or Sash height SH
扇宽 SW 或 扇高 SH

HOP0-ATT50

平开上悬产品安装图
Tilt-turn fittings

图样标记 重量 比例
1:1

标记	更改文件号	工艺	日期
设计	黄少海	批准	A0
制图		版本	2010.03.15
审核		日期	

所有权利保留
All right reserved

好博实业有限公司
HOP0 INDUSTRIAL CO., LTD