



Limits of use

- Ambient temperature: Up to +40°C
- Liquid temperature: Up to +60°C
- PH value of liquid between 6.5-8.5
- Power: 50hz, single-phase 220v, three-phase 380v, fluctuated up and down 10%

Features

- The wide inlet and outlet design on this pump casing to assure high flow.
- More choice on the inlet and outlet under one motor to make more choice for different use.
- Widely voltage range 180-240V design to be suitable for irrigation specially.

Application

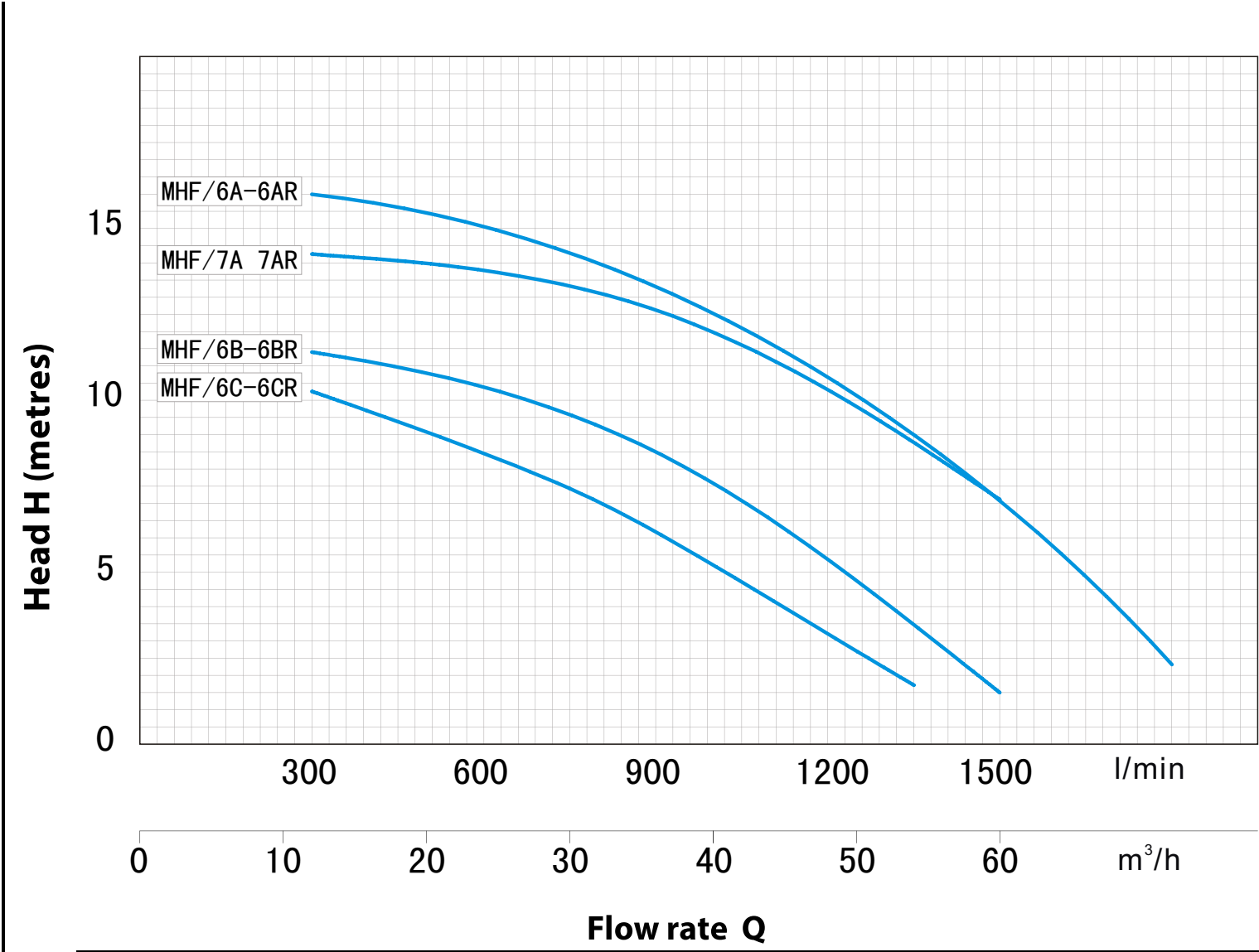
- Be used to delivery the clean water without the abrasive particles
- Be used to clean or cool the machine tools with high pressure
- Be used to pump the water for the industrial or house use from the well
- Be used to boost the water in pressurization system
- The high flow centrifugal pump is widely used for cold/hot water circulating and pressure boosting in many fields (chemical industry, petrochemical industry, military industry, pharmaceutical industry, nuclear power industry, ship building industry, textile industry, etc.) and systems (HVAC, firefighting system, urban water supply and drainage system, irrigation system for gardens, water boosting system in high-rise buildings, etc.). From this point of view, it is also known as firefighting pump, irrigation pump or water circulation pump.

Warranty

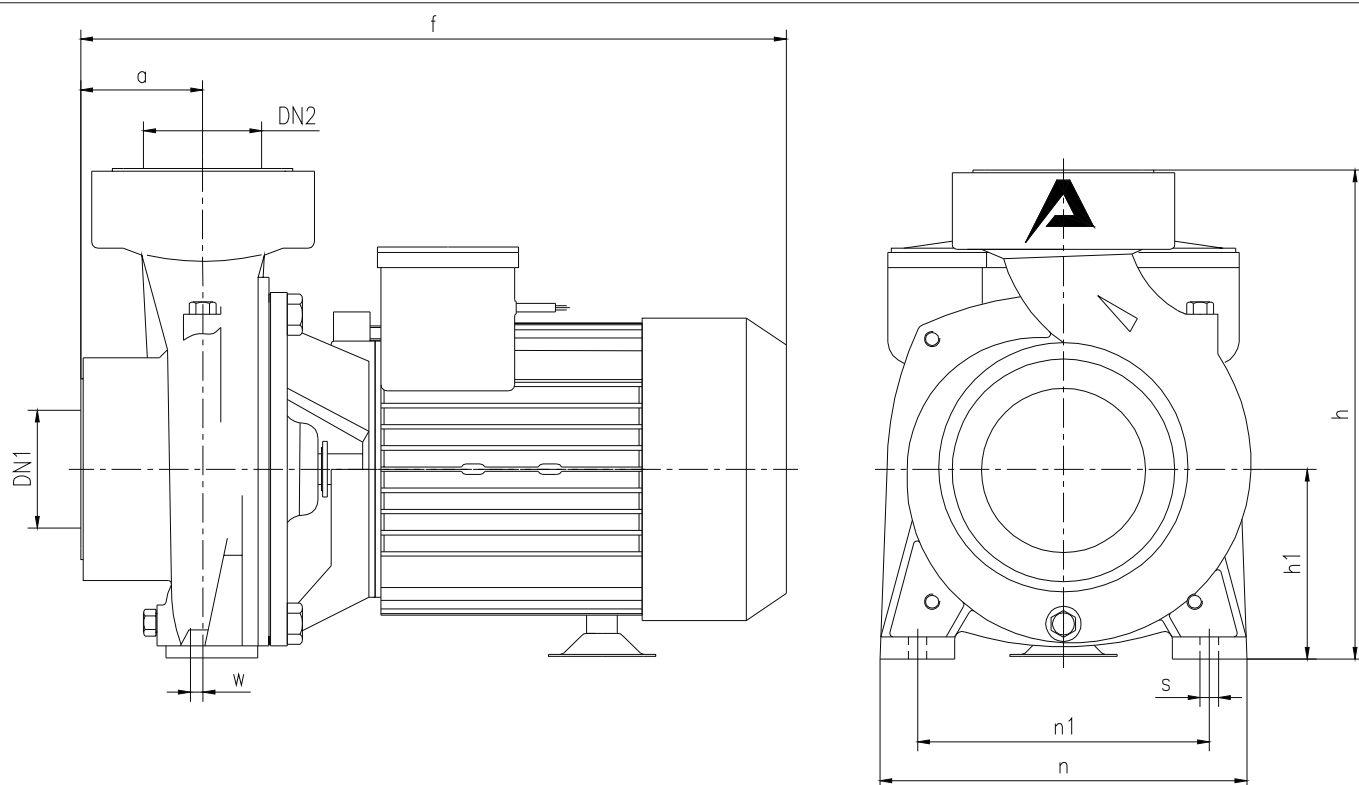
- 2 years subject to terms and conditions

CHARACTERISTIC CURVES AND PERFORMANCE DATA

50 Hz n=2850 rpm Hs=0 m



| Model | | Power | | Q | m³/h | 0 | 15 | 18 | 30 | 36 | 48 | 54 | 60 | 72 | 96 | 108.0 |
|--------------|-------------|-------|-----|--------|-------|------|------|------|------|------|------|-----|------|------|------|-------|
| Single-phase | Three-phase | KW | HP | | l/min | 0 | 250 | 300 | 500 | 600 | 800 | 900 | 1000 | 1200 | 1600 | 1800 |
| MHF/6C | MH/6C | 1.1 | 1.5 | H m | 10.6 | 10 | 9.6 | 7.5 | 6.2 | 3.2 | 1.7 | | | | | |
| MHF/6CR | MH/6CR | 1.1 | 1.5 | | 10.6 | 10 | 9.6 | 7.5 | 6.2 | 3.2 | 1.7 | | | | | |
| MHF/6B | MH/6B | 1.5 | 2 | | 11.6 | 11.2 | 11 | 9.5 | 8.5 | 5.4 | 3.5 | 2 | | | | |
| MHF/6BR | MH/6BR | 1.5 | 2 | | 11.6 | 11.2 | 11 | 9.5 | 8.5 | 5.4 | 3.5 | 2 | | | | |
| MHF/6A | MH/6A | 2.2 | 3 | | 16.2 | 15.8 | 15.6 | 14.3 | 13.3 | 10.6 | 9 | 7 | 2.3 | | | |
| MHF/6AR | MH/6AR | 2.2 | 3 | | 16.2 | 15.8 | 15.6 | 14.3 | 13.3 | 10.6 | 9 | 7 | 2.3 | | | |
| MHF/7AR | MH/7AR | 3.75 | 5 | | 14.6 | 14.5 | 14.3 | 14.1 | 13.8 | 13.5 | 13.1 | 12 | 10 | 9.2 | 7.2 | |



| Model | | Openings | | Dimensions(mm) | | | | | | | | | |
|--------------|-------------|----------|-----|----------------|-----|-----|-----|-----|-----|-----|-----|----|----|
| Single-phase | Three-phase | DN1 | DN2 | a | f | h | h1 | n | n1 | w | s | w | s |
| MHF/6C | MH/6C | 3" | 3" | 73 | 404 | 312 | 123 | 238 | 190 | 14 | 12 | | |
| MHF/6CR | MH/6CR | 4" | 4" | 81 | 412 | 318 | 123 | 238 | 190 | 18 | 12 | | |
| MHF/6B | MH/6B | 3" | 3" | 73 | 404 | 312 | 123 | 238 | 190 | 14 | 12 | | |
| MHF/6BR | MH/6BR | 4" | 4" | 81 | 412 | 318 | 123 | 238 | 190 | 18 | 12 | | |
| MHF/6A | MH/6A | 3" | 3" | 73 | 450 | 312 | 123 | 238 | 190 | 14 | 12 | | |
| MHF/6AR | MH/6AR | 4" | 4" | 81 | 460 | 318 | 123 | 238 | 190 | 18 | 12 | | |
| MHF/7AR | MH/7AR | 4" | 4" | 112.5 | 562 | 556 | 423 | 413 | 162 | 267 | 227 | 40 | 16 |

| Model | Piece | GW(kg) | NW(kg) | Volume(m ³) | L(cm) | W(cm) | H(cm) |
|---------|-------|--------|--------|-------------------------|-------|-------|-------|
| MHF/6C | 1 | 29.71 | 26.5 | 0.044 | 45.7 | 28.3 | 34.0 |
| MHF/6CR | 1 | 32.71 | 29.5 | 0.044 | 45.7 | 28.3 | 34.0 |
| MHF/6B | 1 | 31.4 | 28.8 | 0.044 | 45.7 | 28.3 | 34.0 |
| MHF/6BR | 1 | 34.4 | 31.8 | 0.044 | 45.7 | 28.3 | 34.0 |
| MHF/6A | 1 | 37.6 | 35 | 0.048 | 50.2 | 28.3 | 34.0 |
| MHF/6AR | 1 | 41.5 | 38.5 | 0.048 | 50.2 | 28.3 | 34.0 |
| MHF/7AR | 1 | 85 | 83 | 0.083 | 60.0 | 33.0 | 42.0 |

POS. COMPONENT

ADVANTAGE



• Anti-rust system

- Use electrophoretic paint to prevent rust or jam
- To provide cleaner water
- To ensure long using-life



• Thermostability system

- Capacitor with 85°C high temperature film
- Can be used under sun exposure
- Can be used under high temperature environment



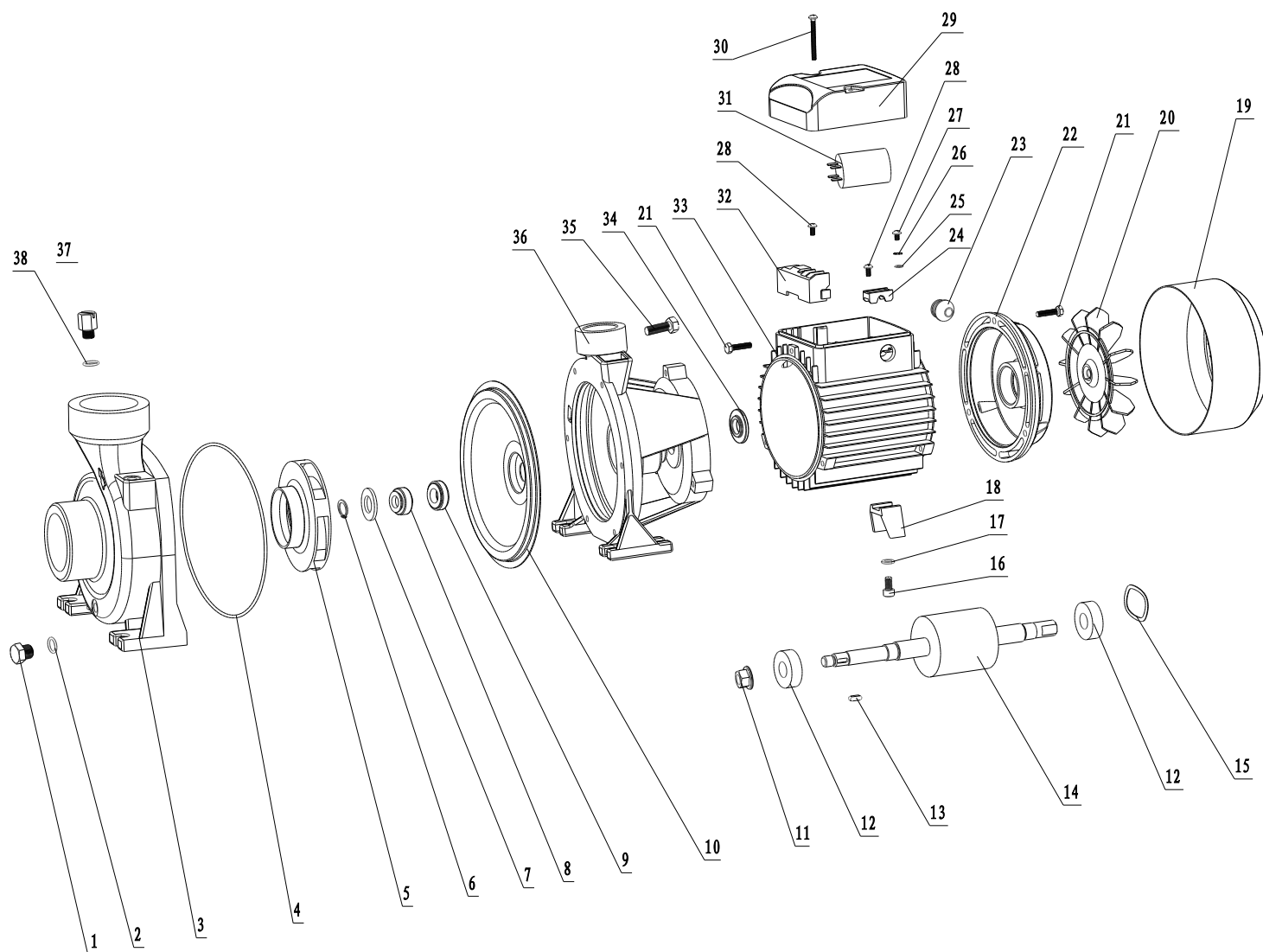
• Powerful motor system

- To ensure the high power and lowest temperature rise
- Using thermal protection device to protect the motor
- Big flow and long using-life
- Wide voltage rang design motor can be used under 170 - 250 V



• Low noise system

- Using Z4 class bearing to ensure lowest noise
- To ensure long using-life



MARQUIS Typical Water Supply System

It is strongly recommended to use this pump together with MARQUIS EC to control your water supply easily.

